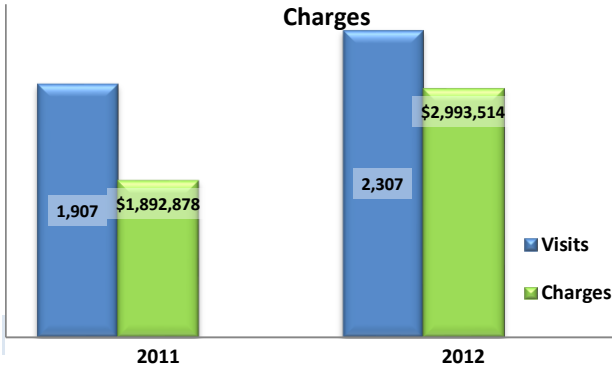


Emergency Department Dental Visits & Charges

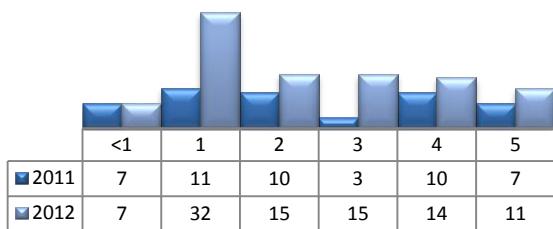


Ambulatory Care Sensitive oral health conditions (ACS) are those considered largely avoidable with adequate prevention and primary care. The use of hospital emergency departments – among the most expensive form of medical care – for the treatment of ACS conditions may indicate lack of access to primary dental care. Among the reasons Floridians do not receive regular preventive care include lack of dental coverage for adult Medicaid patients, lack of private-practice dentists willing to accept Medicaid's low payment rates, lack of county health department resources, lack of affordable dental insurance or inability to meet high co-pays, and lack of awareness of the importance of dental health to overall health.

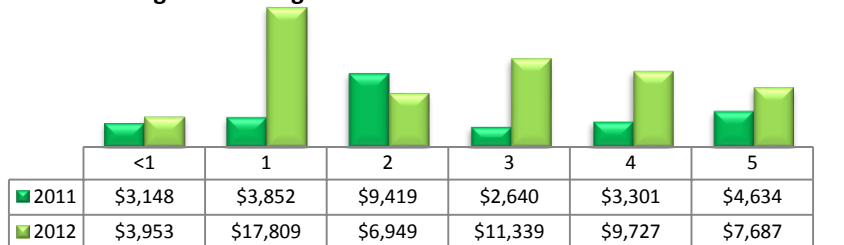
Floridians absorb the cost of Medicaid and uninsured ER dental visits in several ways including higher health insurance premiums and healthcare costs, increased tax dollars needed to fund the state Medicaid program, increased local tax dollars to support local public hospitals, and lost productivity.

Visits by Payor & Age						Charges by Payor & Age					
	0-19	19-34	35-49	50-64	65+		0-19	20-34	35-49	50-64	65+
<b>2011</b>	<b>182</b>	<b>1,110</b>	<b>421</b>	<b>174</b>	<b>20</b>	<b>2011</b>	<b>139,934</b>	<b>1,001,413</b>	<b>499,811</b>	<b>222,886</b>	<b>28,834</b>
Medicaid/Managed	97	399	111	49	0	Medicaid/Managed	66,519	343,593	123,872	59,937	-
Commercial	34	123	46	29	1	Commercial	26,060	132,854	80,426	51,303	520
Self-Pay/Uninsured	47	558	213	57	1	Self-Pay/Uninsured	45,592	494,001	225,985	62,728	1,004
Kidcare	1	0	0	0	0	Kidcare	369	-	-	-	-
Medicare/Managed	0	22	43	34	17	Medicare/Managed	-	23,738	60,670	34,071	25,598
All Other	3	8	8	5	1	All Other	1,394	7,227	8,858	14,847	1,712
<b>2012</b>	<b>270</b>	<b>1,292</b>	<b>493</b>	<b>209</b>	<b>43</b>	<b>2012</b>	<b>253,421</b>	<b>1,641,715</b>	<b>665,453</b>	<b>312,421</b>	<b>120,504</b>
Medicaid/Managed	184	515	146	54	0	Medicaid/Managed	137,639	686,535	214,266	80,406	-
Commercial	30	124	61	46	0	Commercial	40,701	133,390	65,578	70,839	-
Self-Pay/Uninsured	50	607	230	68	3	Self-Pay/Uninsured	68,167	757,708	302,156	101,676	2,048
Kidcare	3	1	0	0	0	Kidcare	2,932	306	-	-	-
Medicare/Managed	0	31	53	36	40	Medicare/Managed	-	38,057	81,158	51,707	118,456
All Other	3	14	3	5	0	All Other	3,982	25,719	2,295	7,793	-

Visits for Young Children for Preventable Conditions



Charges for Young Children for Preventable Conditions



Highest ED Dental ACS Visits by Zip Code

Zip Code	2011		2012	
	Visits	Charges	Visits	Charges
32607	305	341,089	378	548,528
32641	287	248,410	280	292,939
32608	282	231,495	361	486,426
32609	230	199,901	275	343,451
32601	158	187,817	221	196,691
32640	97	90,742	95	92,373
32605	77	79,960	85	144,997
32606	71	73,990	79	144,053
32618	69	55,367	82	74,087

Policy Indicators

Indicators to consider in shaping policies to increase the overall health of Floridians while decreasing costs to the state's healthcare system:

- High numbers of Medicaid patients visiting the ER for ACS dental problems suggest a lack of access to dentists or oral healthcare clinics accepting Medicaid for both preventative care and for treatment.
- ER visits during the regular work day and traditional business hours, combined with ACS diagnoses, suggest visits being made to the ER in lieu of a clinic or dental office.
- Rates of adult tooth decay are higher in older adults yet patients aged 20 to 34 years comprise the largest segment of ER visits, suggesting that lack of dental insurance or an inability to meet high co-pays is driving such visits.

<sup>1</sup> Source: Emergency Room Database, Florida Agency on Health Care Administration

<sup>2</sup> Ambulatory care sensitive dental conditions, i.e. "preventable condition," are based on the ICD-9 (International Classification of Diseases, 9th Edition) codes from the published work of Dr. John Billings [http://wagner.nyu.edu/files/admissions/acs\\_codes.pdf](http://wagner.nyu.edu/files/admissions/acs_codes.pdf).