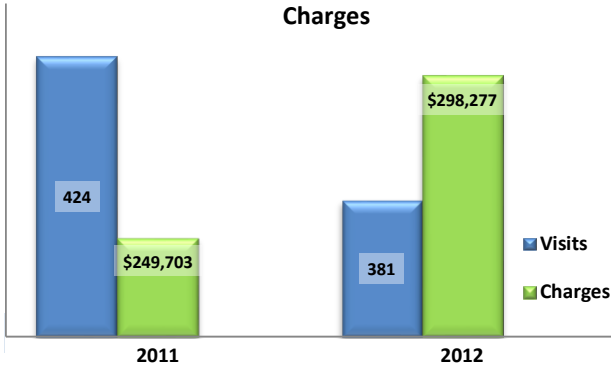


Emergency Department Dental Visits & Charges

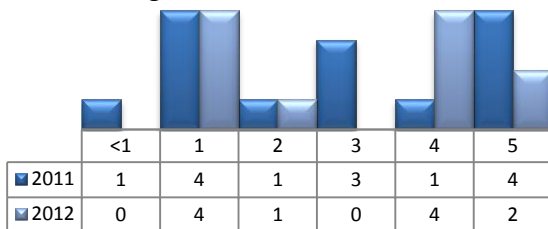


Ambulatory Care Sensitive oral health conditions (ACS) are those considered largely avoidable with adequate prevention and primary care. The use of hospital emergency departments – among the most expensive form of medical care – for the treatment of ACS conditions may indicate lack of access to primary dental care. Among the reasons Floridians do not receive regular preventive care include lack of dental coverage for adult Medicaid patients, lack of private-practice dentists willing to accept Medicaid’s low payment rates, lack of county health department resources, lack of affordable dental insurance or inability to meet high co-pays, and lack of awareness of the importance of dental health to overall health.

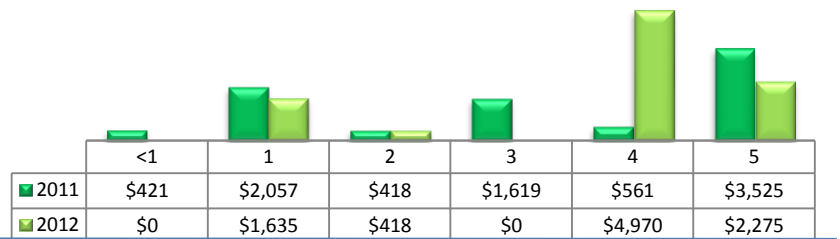
Floridians absorb the cost of Medicaid and uninsured ER dental visits in several ways including higher health insurance premiums and healthcare costs, increased tax dollars needed to fund the state Medicaid program, increased local tax dollars to support local public hospitals, and lost productivity.

Visits by Payor & Age						Charges by Payor & Age					
	0-19	19-34	35-49	50-64	65+		0-19	20-34	35-49	50-64	65+
2011	31	217	128	40	8	2011	22,115	116,322	74,938	28,799	7,529
Medicaid/Managed	19	78	24	3	0	Medicaid/Managed	15,329	45,862	12,079	1,485	-
Commercial	8	39	22	11	1	Commercial	3,981	21,035	16,428	4,854	418
Self-Pay/Uninsured	3	67	47	8	1	Self-Pay/Uninsured	2,387	33,997	26,524	5,529	695
Kidcare	0	1	0	0	0	Kidcare	-	522	-	-	-
Medicare/Managed	0	1	15	12	6	Medicare/Managed	-	362	9,271	13,117	6,416
All Other	1	31	20	6	0	All Other	418	14,544	10,636	3,814	-
2012	35	224	92	24	6	2012	25,422	162,698	72,279	27,405	10,473
Medicaid/Managed	19	85	31	6	0	Medicaid/Managed	14,624	67,323	21,455	5,052	-
Commercial	6	36	9	4	1	Commercial	3,492	28,406	10,612	2,413	668
Self-Pay/Uninsured	8	84	39	5	0	Self-Pay/Uninsured	6,090	54,146	26,141	12,914	-
Medicare/Managed	0	11	7	5	5	Medicare/Managed	-	7,580	5,894	3,830	9,805
All Other	2	8	6	4	0	All Other	1,216	5,243	8,177	3,196	-

Visits for Young Children for Preventable Conditions



Charges for Young Children for Preventable Conditions



Highest ED Dental ACS Visits by Zip Code

Zip Code	2011		2012	
	Visits	Charges	Visits	Charges
32063	245	135,256	201	152,489
32040	106	56,468	98	78,265
32087	72	57,327	82	67,523
32072	1	652	-	0

Policy Indicators

Indicators to consider in shaping policies to increase the overall health of Floridians while decreasing costs to the state’s healthcare system:

- High numbers of Medicaid patients visiting the ER for ACS dental problems suggest a lack of access to dentists or oral healthcare clinics accepting Medicaid for both preventative care and for treatment.
- ER visits during the regular work day and traditional business hours, combined with ACS diagnoses, suggest visits being made to the ER in lieu of a clinic or dental office.
- Rates of adult tooth decay are higher in older adults yet patients aged 20 to 34 years comprise the largest segment of ER visits, suggesting that lack of dental insurance or an inability to meet high co-pays is driving such visits.

¹ Source: Emergency Room Database, Florida Agency on Health Care Administration

² Ambulatory care sensitive dental conditions, i.e. "preventable condition," are based on the ICD-9 (International Classification of Diseases, 9th Edition) codes from the published work of Dr. John Billings (http://wagner.nyu.edu/files/admissions/acs_codes.pdf).