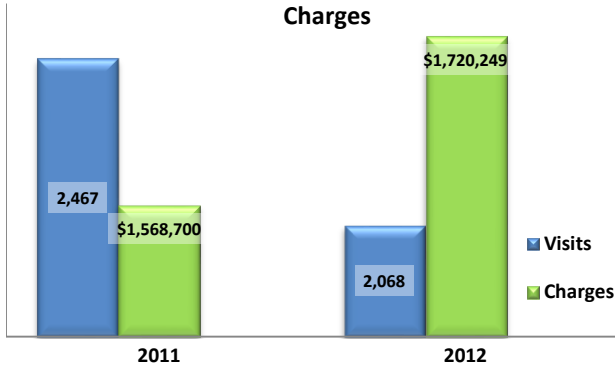


**Emergency Department Dental Visits & Charges**

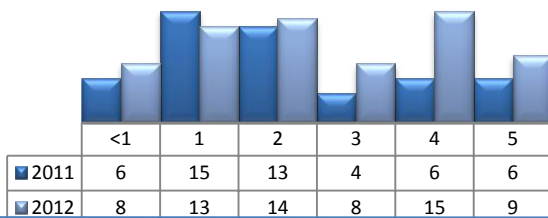


Ambulatory Care Sensitive oral health conditions (ACS) are those considered largely avoidable with adequate prevention and primary care. The use of hospital emergency departments – among the most expensive form of medical care – for the treatment of ACS conditions may indicate lack of access to primary dental care. Among the reasons Floridians do not receive regular preventive care include lack of dental coverage for adult Medicaid patients, lack of private-practice dentists willing to accept Medicaid’s low payment rates, lack of county health department resources, lack of affordable dental insurance or inability to meet high co-pays, and lack of awareness of the importance of dental health to overall health.

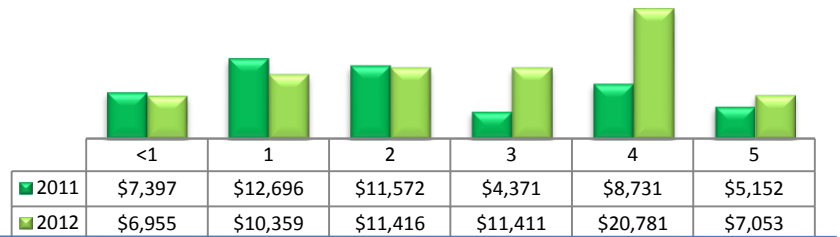
Floridians absorb the cost of Medicaid and uninsured ER dental visits in several ways including higher health insurance premiums and healthcare costs, increased tax dollars needed to fund the state Medicaid program, increased local tax dollars to support local public hospitals, and lost productivity.

Visits by Payor & Age						Charges by Payor & Age					
	0-19	19-34	35-49	50-64	65+		0-19	20-34	35-49	50-64	65+
<b>2011</b>	<b>230</b>	<b>1,354</b>	<b>633</b>	<b>226</b>	<b>24</b>	<b>2011</b>	<b>179,349</b>	<b>759,019</b>	<b>437,342</b>	<b>163,894</b>	<b>29,096</b>
Medicaid/Managed	140	479	142	34	1	Medicaid/Managed	107,715	273,671	106,510	28,376	224
Commercial	29	71	54	13	2	Commercial	31,464	74,046	50,249	7,602	1,726
Self-Pay/Uninsured	44	726	327	111	0	Self-Pay/Uninsured	26,454	345,864	194,712	72,152	-
Kidcare	4	0	0	0	0	Kidcare	4,695	-	-	-	-
Medicare/Managed	0	27	77	33	21	Medicare/Managed	-	34,759	66,411	31,475	27,146
All Other	13	51	33	35	0	All Other	9,021	30,679	19,460	24,289	-
<b>2012</b>	<b>218</b>	<b>1,137</b>	<b>480</b>	<b>195</b>	<b>38</b>	<b>2012</b>	<b>202,607</b>	<b>861,822</b>	<b>432,556</b>	<b>179,416</b>	<b>43,848</b>
Medicaid/Managed	124	403	114	38	0	Medicaid/Managed	114,343	326,729	90,643	27,331	-
Commercial	20	82	68	18	1	Commercial	22,354	84,081	98,594	28,602	1,295
Self-Pay/Uninsured	50	593	234	63	0	Self-Pay/Uninsured	34,634	406,477	194,748	42,961	-
Kidcare	6	0	0	0	0	Kidcare	10,632	-	-	-	-
Medicare/Managed	0	21	43	54	37	Medicare/Managed	-	15,075	27,531	46,395	42,553
All Other	18	38	21	22	0	All Other	20,644	29,460	21,040	34,127	-

**Visits for Young Children for Preventable Conditions**



**Charges for Young Children for Preventable Conditions**



**Highest ED Dental ACS Visits by Zip Code**

Zip Code	2011		2012	
	Visits	Charges	Visits	Charges
32401	707	411,779	530	390,071
32404	551	334,419	462	346,202
32405	427	281,581	382	338,340
32408	130	87,053	99	100,726
32444	129	82,127	111	102,741
32409	111	70,458	109	103,190
32407	108	86,814	88	70,008
32466	98	63,319	81	76,040
32413	86	64,169	109	97,711
32438	81	60,424	65	50,872

**Policy Indicators**

Indicators to consider in shaping policies to increase the overall health of Floridians while decreasing costs to the state’s healthcare system:

- High numbers of Medicaid patients visiting the ER for ACS dental problems suggest a lack of access to dentists or oral healthcare clinics accepting Medicaid for both preventative care and for treatment.
- ER visits during the regular work day and traditional business hours, combined with ACS diagnoses, suggest visits being made to the ER in lieu of a clinic or dental office.
- Rates of adult tooth decay are higher in older adults yet patients aged 20 to 34 years comprise the largest segment of ER visits, suggesting that lack of dental insurance or an inability to meet high co-pays is driving such visits.

<sup>1</sup> Source: Emergency Room Database, Florida Agency on Health Care Administration

<sup>2</sup> Ambulatory care sensitive dental conditions, i.e. "preventable condition," are based on the ICD-9 (International Classification of Diseases, 9th Edition) codes from the published work of Dr. John Billings ([http://wagner.nyu.edu/files/admissions/acs\\_codes.pdf](http://wagner.nyu.edu/files/admissions/acs_codes.pdf)).