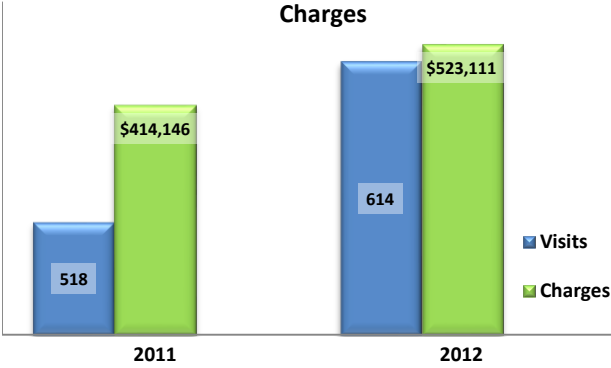


Emergency Department Dental Visits & Charges

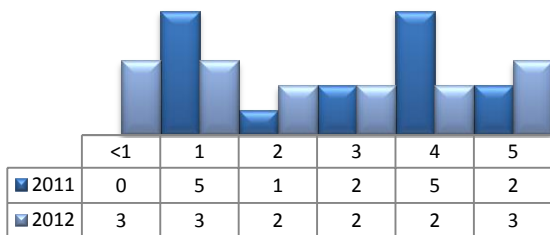


Ambulatory Care Sensitive oral health conditions (ACS) are those considered largely avoidable with adequate prevention and primary care. The use of hospital emergency departments – among the most expensive form of medical care – for the treatment of ACS conditions may indicate lack of access to primary dental care. Among the reasons Floridians do not receive regular preventive care include lack of dental coverage for adult Medicaid patients, lack of private-practice dentists willing to accept Medicaid’s low payment rates, lack of county health department resources, lack of affordable dental insurance or inability to meet high co-pays, and lack of awareness of the importance of dental health to overall health.

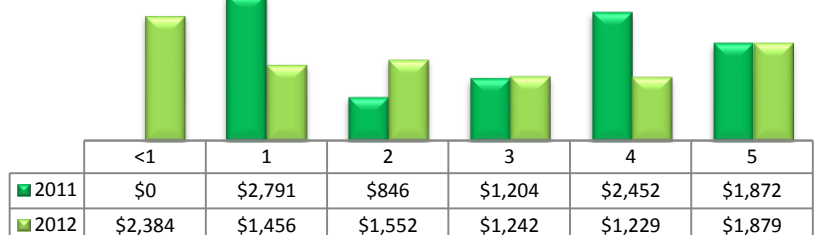
Floridians absorb the cost of Medicaid and uninsured ER dental visits in several ways including higher health insurance premiums and healthcare costs, increased tax dollars needed to fund the state Medicaid program, increased local tax dollars to support local public hospitals, and lost productivity.

Visits by Payor & Age						Charges by Payor & Age					
	0-19	19-34	35-49	50-64	65+		0-19	20-34	35-49	50-64	65+
2011	65	274	120	53	6	2011	45,312	204,989	110,800	49,550	3,495
Medicaid/Managed	45	136	40	13	0	Medicaid/Managed	28,906	96,392	31,644	8,978	-
Commercial	11	20	12	7	0	Commercial	9,937	20,914	7,817	12,808	-
Self-Pay/Uninsured	9	105	51	12	0	Self-Pay/Uninsured	6,469	78,218	57,176	14,387	-
Medicare/Managed	0	8	15	21	6	Medicare/Managed	-	3,795	11,384	13,377	3,495
All Other	0	5	2	0	0	All Other	-	5,670	2,779	-	-
2012	67	337	143	58	9	2012	45,429	291,347	122,953	45,532	17,850
Medicaid/Managed	43	159	48	14	0	Medicaid/Managed	28,538	124,682	43,974	7,929	-
Commercial	12	31	16	9	0	Commercial	9,091	29,090	12,629	9,292	-
Self-Pay/Uninsured	6	130	56	15	0	Self-Pay/Uninsured	4,725	108,797	47,616	9,628	-
Medicare/Managed	0	9	23	19	9	Medicare/Managed	-	17,216	18,734	17,516	17,850
All Other	6	8	0	1	0	All Other	3,075	11,562	-	1,167	-

Visits for Young Children for Preventable Conditions



Charges for Young Children for Preventable Conditions



Highest ED Dental ACS Visits by Zip Code

Zip Code	2011		2012	
	Visits	Charges	Visits	Charges
32091	401	306,355	468	395,511
32058	57	57,610	66	59,773
32044	44	35,136	50	41,161
32622	9	8,684	22	17,875
32042	7	6,361	8	8,791

Policy Indicators

Indicators to consider in shaping policies to increase the overall health of Floridians while decreasing costs to the state’s healthcare system:

- High numbers of Medicaid patients visiting the ER for ACS dental problems suggest a lack of access to dentists or oral healthcare clinics accepting Medicaid for both preventative care and for treatment.
- ER visits during the regular work day and traditional business hours, combined with ACS diagnoses, suggest visits being made to the ER in lieu of a clinic or dental office.
- Rates of adult tooth decay are higher in older adults yet patients aged 20 to 34 years comprise the largest segment of ER visits, suggesting that lack of dental insurance or an inability to meet high co-pays is driving such visits.

¹ Source: Emergency Room Database, Florida Agency on Health Care Administration

² Ambulatory care sensitive dental conditions, i.e. "preventable condition," are based on the ICD-9 (International Classification of Diseases, 9th Edition) codes from the published work of Dr. John Billings (http://wagner.nyu.edu/files/admissions/acs_codes.pdf).