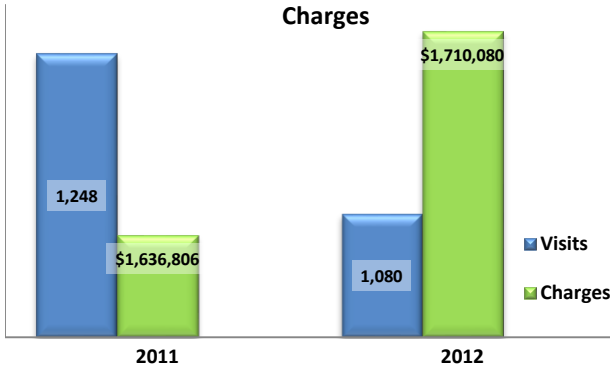


Emergency Department Dental Visits & Charges

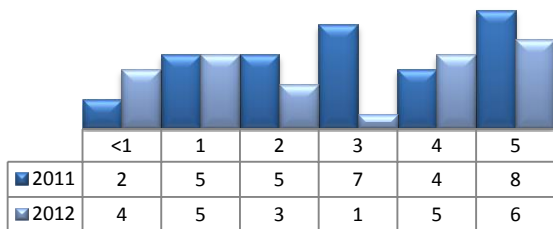


Ambulatory Care Sensitive oral health conditions (ACS) are those considered largely avoidable with adequate prevention and primary care. The use of hospital emergency departments – among the most expensive form of medical care – for the treatment of ACS conditions may indicate lack of access to primary dental care. Among the reasons Floridians do not receive regular preventive care include lack of dental coverage for adult Medicaid patients, lack of private-practice dentists willing to accept Medicaid’s low payment rates, lack of county health department resources, lack of affordable dental insurance or inability to meet high co-pays, and lack of awareness of the importance of dental health to overall health.

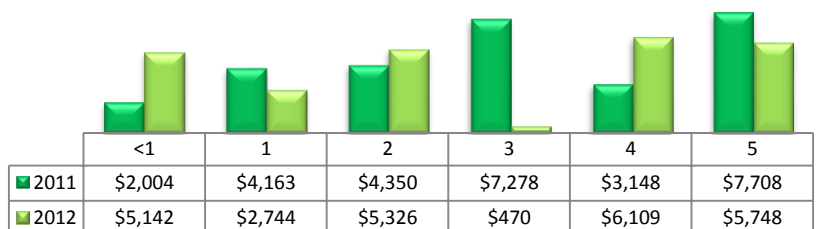
Floridians absorb the cost of Medicaid and uninsured ER dental visits in several ways including higher health insurance premiums and healthcare costs, increased tax dollars needed to fund the state Medicaid program, increased local tax dollars to support local public hospitals, and lost productivity.

Visits by Payor & Age						Charges by Payor & Age					
	0-19	19-34	35-49	50-64	65+		0-19	20-34	35-49	50-64	65+
2011	118	692	286	112	40	2011	138,648	878,507	375,433	153,895	90,323
Medicaid/Managed	91	313	95	25	1	Medicaid/Managed	102,030	388,781	110,913	34,026	6,323
Commercial	10	32	28	15	0	Commercial	16,180	51,165	38,440	21,116	-
Self-Pay/Uninsured	12	302	130	28	1	Self-Pay/Uninsured	14,408	375,622	175,144	42,489	2,337
Kidcare	0	1	0	0	0	Kidcare	-	1,833	-	-	-
Medicare/Managed	3	27	19	35	38	Medicare/Managed	4,092	31,855	30,921	44,326	81,663
All Other	2	17	14	9	0	All Other	1,938	29,251	20,015	11,938	-
2012	105	560	280	100	35	2012	122,664	807,863	449,744	196,875	132,934
Medicaid/Managed	76	254	93	18	1	Medicaid/Managed	90,588	352,577	133,230	28,400	5,469
Commercial	14	47	37	20	0	Commercial	16,683	77,592	62,156	53,132	-
Self-Pay/Uninsured	11	225	93	32	2	Self-Pay/Uninsured	8,900	328,888	165,167	53,270	2,279
Kidcare	3	0	0	0	0	Kidcare	5,208	-	-	-	-
Medicare/Managed	1	15	45	27	32	Medicare/Managed	1,285	14,943	68,077	58,579	125,186
All Other	0	19	12	3	0	All Other	-	33,863	21,114	3,494	-

Visits for Young Children for Preventable Conditions



Charges for Young Children for Preventable Conditions



Highest ED Dental ACS Visits by Zip Code

Zip Code	2011		2012	
	Visits	Charges	Visits	Charges
33952	367	488,239	312	538,402
33950	176	194,037	162	185,231
33948	172	232,893	132	199,006
34224	96	147,725	67	115,243
33982	76	91,521	63	85,444
33980	67	94,653	41	96,928
33983	66	91,857	67	110,237
33955	66	79,600	48	52,659
33954	47	49,856	79	88,337
33981	36	53,233	55	117,042

Policy Indicators

Indicators to consider in shaping policies to increase the overall health of Floridians while decreasing costs to the state’s healthcare system:

- High numbers of Medicaid patients visiting the ER for ACS dental problems suggest a lack of access to dentists or oral healthcare clinics accepting Medicaid for both preventative care and for treatment.
- ER visits during the regular work day and traditional business hours, combined with ACS diagnoses, suggest visits being made to the ER in lieu of a clinic or dental office.
- Rates of adult tooth decay are higher in older adults yet patients aged 20 to 34 years comprise the largest segment of ER visits, suggesting that lack of dental insurance or an inability to meet high co-pays is driving such visits.

¹ Source: Emergency Room Database, Florida Agency on Health Care Administration

² Ambulatory care sensitive dental conditions, i.e. "preventable condition," are based on the ICD-9 (International Classification of Diseases, 9th Edition) codes from the published work of Dr. John Billings (http://wagner.nyu.edu/files/admissions/acs_codes.pdf).