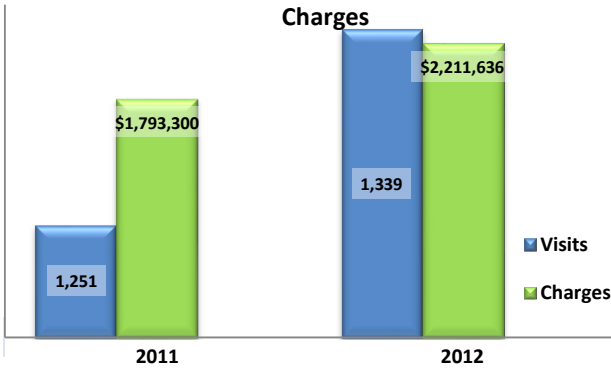


Emergency Department Dental Visits & Charges

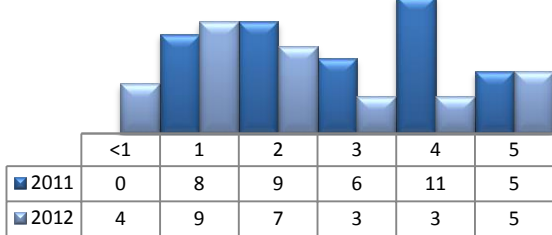


Ambulatory Care Sensitive oral health conditions (ACS) are those considered largely avoidable with adequate prevention and primary care. The use of hospital emergency departments – among the most expensive form of medical care – for the treatment of ACS conditions may indicate lack of access to primary dental care. Among the reasons Floridians do not receive regular preventive care include lack of dental coverage for adult Medicaid patients, lack of private-practice dentists willing to accept Medicaid's low payment rates, lack of county health department resources, lack of affordable dental insurance or inability to meet high co-pays, and lack of awareness of the importance of dental health to overall health.

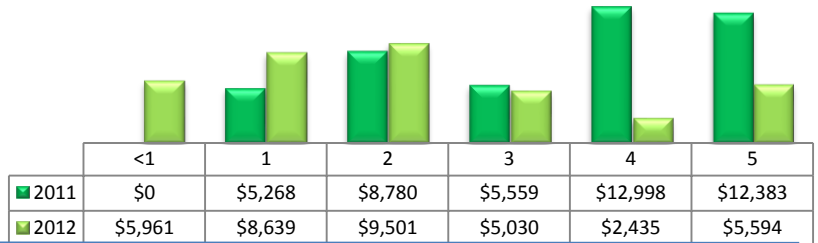
Floridians absorb the cost of Medicaid and uninsured ER dental visits in several ways including higher health insurance premiums and healthcare costs, increased tax dollars needed to fund the state Medicaid program, increased local tax dollars to support local public hospitals, and lost productivity.

Visits by Payor & Age						Charges by Payor & Age					
	0-19	19-34	35-49	50-64	65+		0-19	20-34	35-49	50-64	65+
2011	144	655	335	93	24	202,509	878,829	510,025	155,704	46,233	
Medicaid/Managed	92	221	88	14	0	142,735	293,499	136,788	11,122	-	
Commercial	18	63	50	18	0	18,492	97,091	105,188	33,855	-	
Self-Pay/Uninsured	31	331	154	42	3	36,487	430,364	221,856	74,425	3,538	
Medicare/Managed	0	11	29	14	21	-	13,633	30,854	25,769	42,695	
All Other	3	29	14	5	0	4,795	44,242	15,339	10,533	-	
2012	145	735	332	104	23	224,529	1,170,704	560,600	178,449	77,354	
Medicaid/Managed	92	329	95	28	0	126,171	487,558	138,808	46,158	-	
Commercial	23	72	50	22	0	51,310	121,322	101,577	37,748	-	
Self-Pay/Uninsured	20	285	137	26	1	28,035	471,340	229,040	49,606	1,614	
Medicare/Managed	0	10	18	19	21	-	18,081	30,612	28,536	75,373	
All Other	10	39	32	9	1	19,013	72,403	60,563	16,401	367	

Visits for Young Children for Preventable Conditions



Charges for Young Children for Preventable Conditions



Zip Code	2011		2012	
	Visits	Charges	Visits	Charges
32068	370	582,948	359	596,114
32073	350	556,162	414	719,850
32043	167	227,579	164	309,344
32656	164	123,547	178	158,440
32065	150	222,005	169	330,384
32003	32	45,306	45	77,906
32067	9	25,389	3	5,881
32079	4	5,254	3	6,799
32050	4	4,869	2	3,545
32006	1	241	2	3,373

Policy Indicators

Indicators to consider in shaping policies to increase the overall health of Floridians while decreasing costs to the state's healthcare system:

- High numbers of Medicaid patients visiting the ER for ACS dental problems suggest a lack of access to dentists or oral healthcare clinics accepting Medicaid for both preventative care and for treatment.
- ER visits during the regular work day and traditional business hours, combined with ACS diagnoses, suggest visits being made to the ER in lieu of a clinic or dental office.
- Rates of adult tooth decay are higher in older adults yet patients aged 20 to 34 years comprise the largest segment of ER visits, suggesting that lack of dental insurance or an inability to meet high co-pays is driving such visits.

¹ Source: Emergency Room Database, Florida Agency on Health Care Administration

² Ambulatory care sensitive dental conditions, i.e. "preventable condition," are based on the ICD-9 (International Classification of Diseases, 9th Edition) codes from the published work of Dr. John Billings (http://wagner.nyu.edu/files/admissions/acs_codes.pdf).