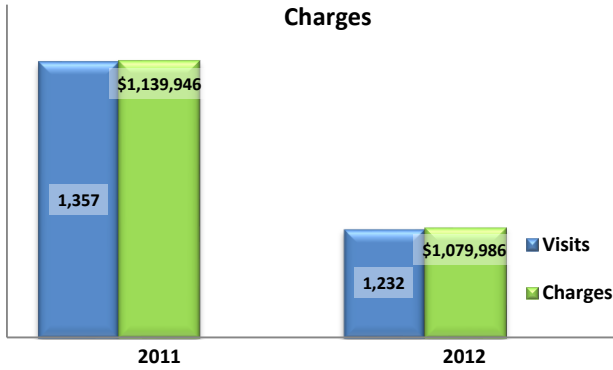


Emergency Department Dental Visits & Charges

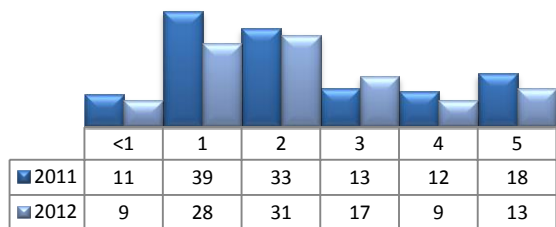


Ambulatory Care Sensitive oral health conditions (ACS) are those considered largely avoidable with adequate prevention and primary care. The use of hospital emergency departments – among the most expensive form of medical care – for the treatment of ACS conditions may indicate lack of access to primary dental care. Among the reasons Floridians do not receive regular preventive care include lack of dental coverage for adult Medicaid patients, lack of private-practice dentists willing to accept Medicaid’s low payment rates, lack of county health department resources, lack of affordable dental insurance or inability to meet high co-pays, and lack of awareness of the importance of dental health to overall health.

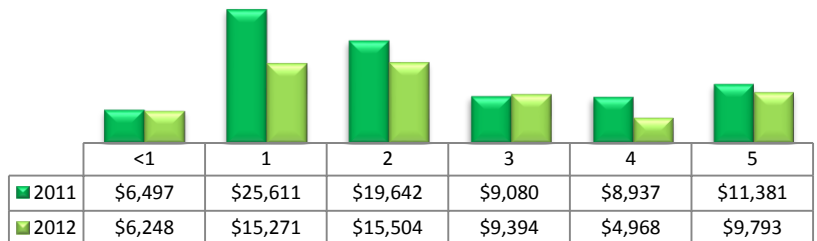
Floridians absorb the cost of Medicaid and uninsured ER dental visits in several ways including higher health insurance premiums and healthcare costs, increased tax dollars needed to fund the state Medicaid program, increased local tax dollars to support local public hospitals, and lost productivity.

Visits by Payor & Age						Charges by Payor & Age					
	0-19	19-34	35-49	50-64	65+		0-19	20-34	35-49	50-64	65+
2011	253	608	289	154	53	2011	178,637	484,038	237,625	166,880	72,766
Medicaid/Managed	187	208	73	21	0	Medicaid/Managed	138,411	154,364	68,903	20,101	-
Commercial	27	77	50	35	2	Commercial	15,782	88,064	43,620	47,693	8,848
Self-Pay/Uninsured	33	281	139	61	0	Self-Pay/Uninsured	19,633	215,340	97,181	63,623	-
Kidcare	1	0	0	0	0	Kidcare	438	-	-	-	-
Medicare/Managed	0	24	20	27	50	Medicare/Managed	-	15,656	23,476	29,391	63,606
All Other	5	18	7	10	1	All Other	4,373	10,614	4,445	6,072	312
2012	215	531	303	128	55	2012	150,413	425,509	309,688	113,678	80,698
Medicaid/Managed	137	189	83	18	1	Medicaid/Managed	106,283	153,637	110,095	12,047	870
Commercial	21	60	58	27	1	Commercial	11,416	55,827	48,545	25,097	1,221
Self-Pay/Uninsured	40	213	101	45	0	Self-Pay/Uninsured	22,046	172,077	98,086	37,558	-
Kidcare	9	0	0	0	0	Kidcare	6,814	-	-	-	-
Medicare/Managed	0	10	23	20	53	Medicare/Managed	-	4,394	13,587	25,139	78,607
All Other	8	59	38	18	0	All Other	3,854	39,574	39,375	13,837	-

Visits for Young Children for Preventable Conditions



Charges for Young Children for Preventable Conditions



Highest ED Dental ACS Visits by Zip Code

Zip Code	2011		2012	
	Visits	Charges	Visits	Charges
34116	251	223,316	194	175,043
34112	152	116,055	149	113,552
34142	119	115,295	97	81,855
34120	118	91,111	108	87,655
34104	109	80,628	130	117,480
34113	88	74,241	74	81,959
34114	87	76,423	70	61,440
34117	83	65,530	84	63,548
34108	49	31,961	56	62,442
34109	46	49,200	58	53,730

Policy Indicators

Indicators to consider in shaping policies to increase the overall health of Floridians while decreasing costs to the state’s healthcare system:

- High numbers of Medicaid patients visiting the ER for ACS dental problems suggest a lack of access to dentists or oral healthcare clinics accepting Medicaid for both preventative care and for treatment.
- ER visits during the regular work day and traditional business hours, combined with ACS diagnoses, suggest visits being made to the ER in lieu of a clinic or dental office.
- Rates of adult tooth decay are higher in older adults yet patients aged 20 to 34 years comprise the largest segment of ER visits, suggesting that lack of dental insurance or an inability to meet high co-pays is driving such visits.

¹ Source: Emergency Room Database, Florida Agency on Health Care Administration

² Ambulatory care sensitive dental conditions, i.e. "preventable condition," are based on the ICD-9 (International Classification of Diseases, 9th Edition) codes from the published work of Dr. John Billings (http://wagner.nyu.edu/files/admissions/acs_codes.pdf).