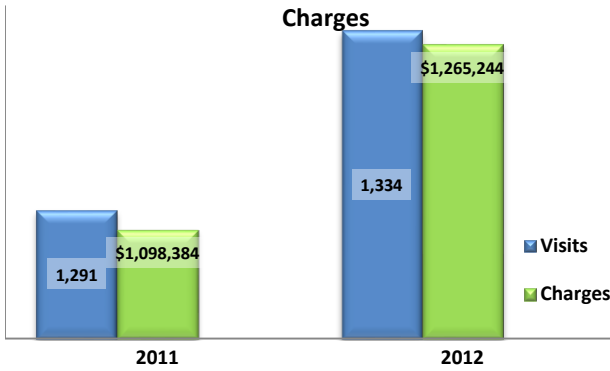


Emergency Department Dental Visits & Charges

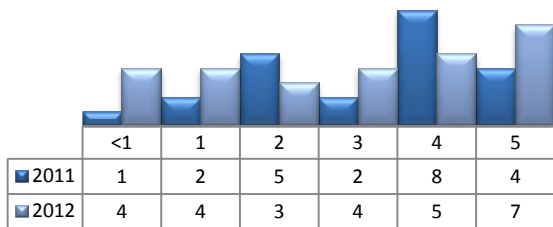


Ambulatory Care Sensitive oral health conditions (ACS) are those considered largely avoidable with adequate prevention and primary care. The use of hospital emergency departments – among the most expensive form of medical care – for the treatment of ACS conditions may indicate lack of access to primary dental care. Among the reasons Floridians do not receive regular preventive care include lack of dental coverage for adult Medicaid patients, lack of private-practice dentists willing to accept Medicaid's low payment rates, lack of county health department resources, lack of affordable dental insurance or inability to meet high co-pays, and lack of awareness of the importance of dental health to overall health.

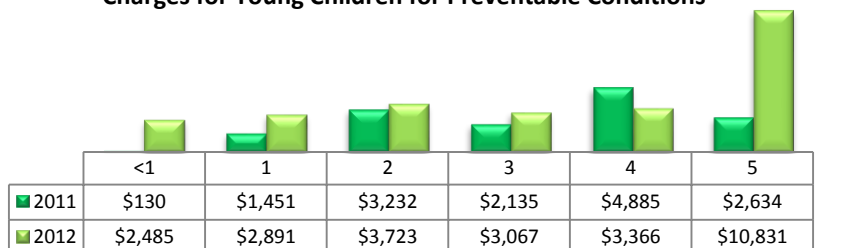
Floridians absorb the cost of Medicaid and uninsured ER dental visits in several ways including higher health insurance premiums and healthcare costs, increased tax dollars needed to fund the state Medicaid program, increased local tax dollars to support local public hospitals, and lost productivity.

Visits by Payor & Age						Charges by Payor & Age					
	0-19	19-34	35-49	50-64	65+		0-19	20-34	35-49	50-64	65+
2011	123	754	283	117	14	2011	89,814	598,573	282,563	112,202	15,232
Medicaid/Managed	72	296	104	24	0	Medicaid/Managed	52,175	239,428	92,286	14,401	-
Commercial	14	85	57	45	1	Commercial	15,636	77,420	59,897	53,675	448
Self-Pay/Uninsured	35	348	97	25	1	Self-Pay/Uninsured	20,131	266,546	101,676	16,541	718
Medicare/Managed	0	22	25	23	12	Medicare/Managed	-	14,096	28,704	27,585	14,066
All Other	2	3	0	0	0	All Other	1,872	1,083	-	-	-
2012	115	782	286	130	21	2012	90,261	685,118	287,655	163,841	38,369
Medicaid/Managed	67	338	106	38	0	Medicaid/Managed	56,533	321,591	121,585	33,924	-
Commercial	12	65	48	30	1	Commercial	8,216	61,040	51,040	43,271	826
Self-Pay/Uninsured	34	352	107	36	0	Self-Pay/Uninsured	23,413	279,157	83,569	61,529	-
Kidcare	2	0	0	0	0	Kidcare	2,099	-	-	-	-
Medicare/Managed	0	23	23	24	20	Medicare/Managed	-	17,755	26,554	23,640	37,543
All Other	0	4	2	2	0	All Other	-	5,575	4,907	1,477	-

Visits for Young Children for Preventable Conditions



Charges for Young Children for Preventable Conditions



Highest ED Dental ACS Visits by Zip Code

Zip Code	2011		2012	
	Visits	Charges	Visits	Charges
32055	460	391,544	496	477,330
32025	411	345,652	457	399,725
32024	239	216,378	242	245,967
32038	129	103,854	103	111,951
32056	42	31,897	34	28,249
32061	10	9,059	2	2,022

Policy Indicators

Indicators to consider in shaping policies to increase the overall health of Floridians while decreasing costs to the state's healthcare system:

- High numbers of Medicaid patients visiting the ER for ACS dental problems suggest a lack of access to dentists or oral healthcare clinics accepting Medicaid for both preventative care and for treatment.
- ER visits during the regular work day and traditional business hours, combined with ACS diagnoses, suggest visits being made to the ER in lieu of a clinic or dental office.
- Rates of adult tooth decay are higher in older adults yet patients aged 20 to 34 years comprise the largest segment of ER visits, suggesting that lack of dental insurance or an inability to meet high co-pays is driving such visits.

¹ Source: Emergency Room Database, Florida Agency on Health Care Administration

² Ambulatory care sensitive dental conditions, i.e. "preventable condition," are based on the ICD-9 (International Classification of Diseases, 9th Edition) codes from the published work of Dr. John Billings http://wagner.nyu.edu/files/admissions/acs_codes.pdf.