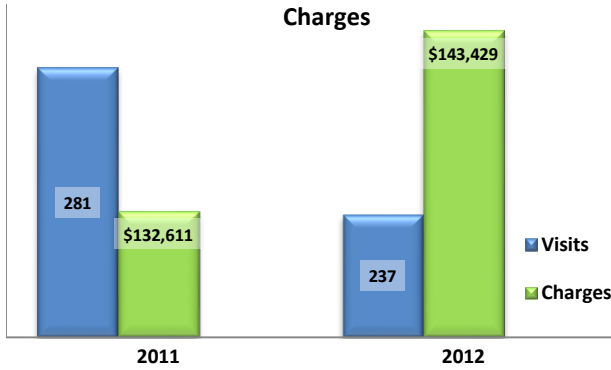


Emergency Department Dental Visits & Charges

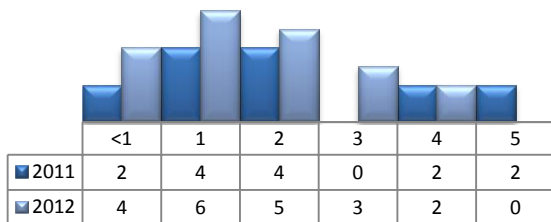


Ambulatory Care Sensitive oral health conditions (ACS) are those considered largely avoidable with adequate prevention and primary care. The use of hospital emergency departments – among the most expensive form of medical care – for the treatment of ACS conditions may indicate lack of access to primary dental care. Among the reasons Floridians do not receive regular preventive care include lack of dental coverage for adult Medicaid patients, lack of private-practice dentists willing to accept Medicaid’s low payment rates, lack of county health department resources, lack of affordable dental insurance or inability to meet high co-pays, and lack of awareness of the importance of dental health to overall health.

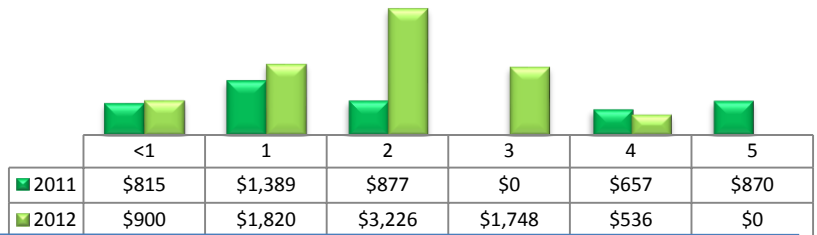
Floridians absorb the cost of Medicaid and uninsured ER dental visits in several ways including higher health insurance premiums and healthcare costs, increased tax dollars needed to fund the state Medicaid program, increased local tax dollars to support local public hospitals, and lost productivity.

Visits by Payor & Age						Charges by Payor & Age					
	0-19	19-34	35-49	50-64	65+		0-19	20-34	35-49	50-64	65+
2011	33	171	50	20	7	2011	15,222	80,332	23,722	10,984	2,351
Medicaid/Managed	28	79	10	3	1	Medicaid/Managed	8,564	33,586	3,405	1,545	177
Commercial	2	12	8	4	0	Commercial	6,109	7,684	3,204	2,587	-
Self-Pay/Uninsured	3	72	26	8	0	Self-Pay/Uninsured	549	34,564	11,244	5,510	-
Medicare/Managed	0	6	5	5	6	Medicare/Managed	-	3,872	1,984	1,342	2,174
All Other	0	2	1	0	0	All Other	-	626	3,885	-	-
2012	37	111	53	23	13	2012	13,111	63,314	42,110	8,789	16,105
Medicaid/Managed	28	49	11	5	0	Medicaid/Managed	9,365	32,758	5,713	1,272	-
Commercial	1	17	6	2	0	Commercial	780	5,917	8,518	550	-
Self-Pay/Uninsured	8	42	33	9	0	Self-Pay/Uninsured	2,966	23,455	27,113	4,979	-
Medicare/Managed	0	3	3	7	13	Medicare/Managed	-	1,184	766	1,988	16,105

Visits for Young Children for Preventable Conditions



Charges for Young Children for Preventable Conditions



Highest ED Dental ACS Visits by Zip Code

Zip Code	2011		2012	
	Visits	Charges	Visits	Charges
34266	256	116,747	200	106,056
34265	9	3,591	16	4,355
34269	8	9,644	13	25,011
34268	5	1,209	8	8,007
34267	3	1,420	-	0

Policy Indicators

Indicators to consider in shaping policies to increase the overall health of Floridians while decreasing costs to the state’s healthcare system:

- High numbers of Medicaid patients visiting the ER for ACS dental problems suggest a lack of access to dentists or oral healthcare clinics accepting Medicaid for both preventative care and for treatment.
- ER visits during the regular work day and traditional business hours, combined with ACS diagnoses, suggest visits being made to the ER in lieu of a clinic or dental office.
- Rates of adult tooth decay are higher in older adults yet patients aged 20 to 34 years comprise the largest segment of ER visits, suggesting that lack of dental insurance or an inability to meet high co-pays is driving such visits.

¹ Source: Emergency Room Database, Florida Agency on Health Care Administration

² Ambulatory care sensitive dental conditions, i.e. "preventable condition," are based on the ICD-9 (International Classification of Diseases, 9th Edition) codes from the published work of Dr. John Billings (http://wagner.nyu.edu/files/admissions/acs_codes.pdf).