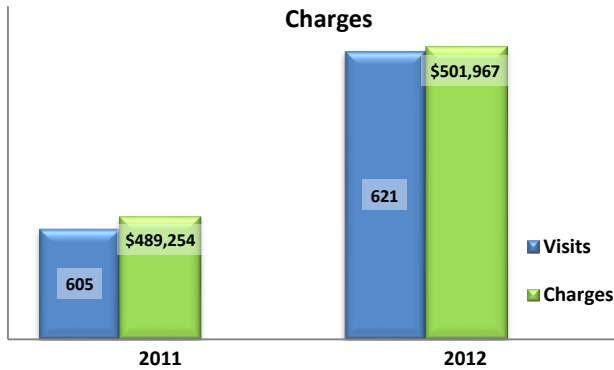


### Emergency Department Dental Visits & Charges

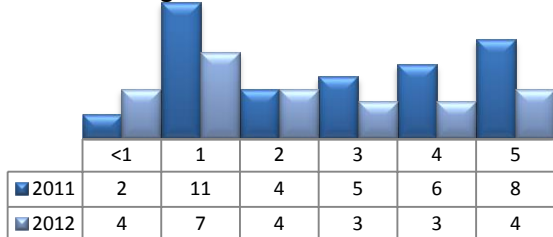


Ambulatory Care Sensitive oral health conditions (ACS) are those considered largely avoidable with adequate prevention and primary care. The use of hospital emergency departments – among the most expensive form of medical care – for the treatment of ACS conditions may indicate lack of access to primary dental care. Among the reasons Floridians do not receive regular preventive care include lack of dental coverage for adult Medicaid patients, lack of private-practice dentists willing to accept Medicaid's low payment rates, lack of county health department resources, lack of affordable dental insurance or inability to meet high co-pays, and lack of awareness of the importance of dental health to overall health.

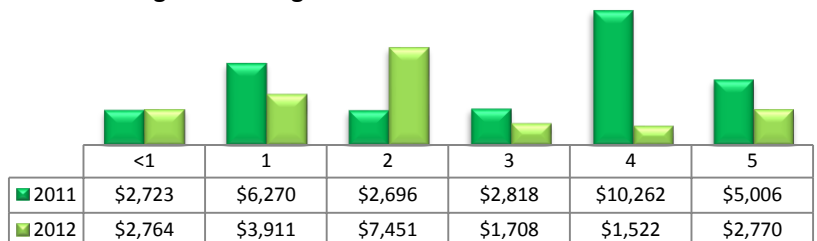
Floridians absorb the cost of Medicaid and uninsured ER dental visits in several ways including higher health insurance premiums and healthcare costs, increased tax dollars needed to fund the state Medicaid program, increased local tax dollars to support local public hospitals, and lost productivity.

Visits by Payor & Age						Charges by Payor & Age					
	0-19	19-34	35-49	50-64	65+		0-19	20-34	35-49	50-64	65+
<b>2011</b>	<b>116</b>	<b>295</b>	<b>119</b>	<b>57</b>	<b>18</b>	<b>2011</b>	<b>106,856</b>	<b>197,953</b>	<b>90,200</b>	<b>78,648</b>	<b>15,597</b>
Medicaid/Managed	82	119	27	10	0	Medicaid/Managed	83,972	85,862	31,297	14,052	-
Commercial	13	30	26	14	0	Commercial	11,394	16,196	16,901	19,183	-
Self-Pay/Uninsured	18	125	47	21	3	Self-Pay/Uninsured	9,387	85,126	28,117	26,232	1,327
Medicare/Managed	0	16	15	10	15	Medicare/Managed	-	9,140	11,563	17,706	14,270
All Other	3	5	4	2	0	All Other	2,103	1,629	2,322	1,475	-
<b>2012</b>	<b>99</b>	<b>303</b>	<b>131</b>	<b>63</b>	<b>25</b>	<b>2012</b>	<b>84,462</b>	<b>225,836</b>	<b>108,823</b>	<b>61,596</b>	<b>21,250</b>
Medicaid/Managed	69	122	37	8	1	Medicaid/Managed	53,449	86,633	30,595	5,909	1,426
Commercial	9	38	23	12	0	Commercial	7,302	30,227	18,339	15,057	-
Self-Pay/Uninsured	15	124	53	22	1	Self-Pay/Uninsured	19,765	97,058	46,558	24,899	674
Kidcare	5	0	0	0	0	Kidcare	3,586	-	-	-	-
Medicare/Managed	0	16	12	20	23	Medicare/Managed	-	9,770	8,562	15,057	19,150
All Other	1	3	6	1	0	All Other	360	2,148	4,769	674	-

### Visits for Young Children for Preventable Conditions



### Charges for Young Children for Preventable Conditions



### Highest ED Dental ACS Visits by Zip Code

Zip Code	2011		2012	
	Visits	Charges	Visits	Charges
32351	305	275,137	291	227,613
32333	100	69,362	87	80,511
32343	52	31,423	63	52,089
32352	50	34,338	53	45,327
32324	40	21,750	48	38,938
32332	32	25,766	45	31,793
32353	15	18,931	20	13,160
32330	11	12,547	14	12,536

### Policy Indicators

Indicators to consider in shaping policies to increase the overall health of Floridians while decreasing costs to the state's healthcare system:

- High numbers of Medicaid patients visiting the ER for ACS dental problems suggest a lack of access to dentists or oral healthcare clinics accepting Medicaid for both preventative care and for treatment.
- ER visits during the regular work day and traditional business hours, combined with ACS diagnoses, suggest visits being made to the ER in lieu of a clinic or dental office.
- Rates of adult tooth decay are higher in older adults yet patients aged 20 to 34 years comprise the largest segment of ER visits, suggesting that lack of dental insurance or an inability to meet high co-pays is driving such visits.

<sup>1</sup> Source: Emergency Room Database, Florida Agency on Health Care Administration

<sup>2</sup> Ambulatory care sensitive dental conditions, i.e. "preventable condition," are based on the ICD-9 (International Classification of Diseases, 9th Edition) codes from the published work of Dr. John Billings ([http://wagner.nyu.edu/files/admissions/acs\\_codes.pdf](http://wagner.nyu.edu/files/admissions/acs_codes.pdf)).