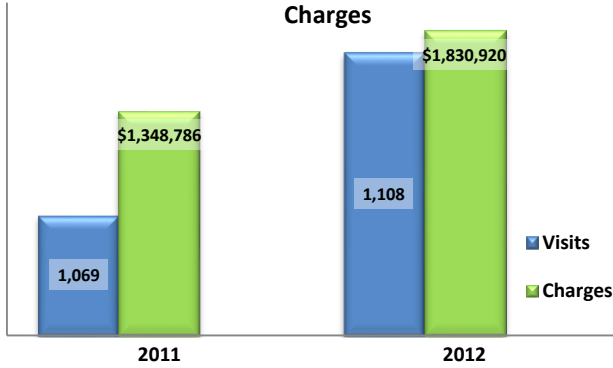


Emergency Department Dental Visits & Charges

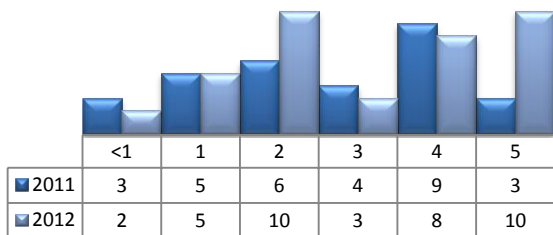


Ambulatory Care Sensitive oral health conditions (ACS) are those considered largely avoidable with adequate prevention and primary care. The use of hospital emergency departments – among the most expensive form of medical care – for the treatment of ACS conditions may indicate lack of access to primary dental care. Among the reasons Floridians do not receive regular preventive care include lack of dental coverage for adult Medicaid patients, lack of private-practice dentists willing to accept Medicaid's low payment rates, lack of county health department resources, lack of affordable dental insurance or inability to meet high co-pays, and lack of awareness of the importance of dental health to overall health.

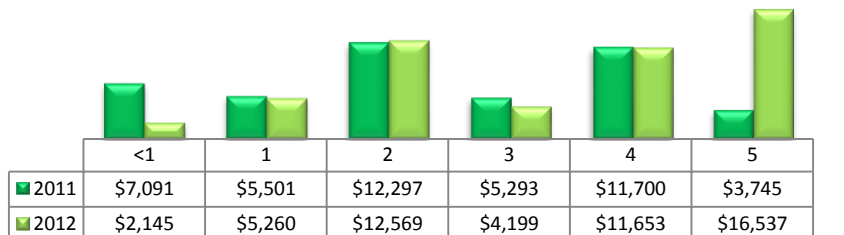
Floridians absorb the cost of Medicaid and uninsured ER dental visits in several ways including higher health insurance premiums and healthcare costs, increased tax dollars needed to fund the state Medicaid program, increased local tax dollars to support local public hospitals, and lost productivity.

Visits by Payor & Age						Charges by Payor & Age					
	0-19	19-34	35-49	50-64	65+		0-19	20-34	35-49	50-64	65+
2011	124	575	271	66	33	2011	156,662	670,083	351,553	90,177	80,311
Medicaid/Managed	90	245	92	12	0	Medicaid/Managed	120,232	292,073	116,331	14,459	-
Commercial	9	45	34	14	0	Commercial	13,842	62,292	47,671	20,211	-
Self-Pay/Uninsured	22	256	109	24	2	Self-Pay/Uninsured	18,620	282,111	135,666	30,719	2,592
Kidcare	1	1	0	0	0	Kidcare	1,364	1,893	-	-	-
Medicare/Managed	0	14	23	13	31	Medicare/Managed	-	18,085	25,393	22,517	77,719
All Other	2	14	13	3	0	All Other	2,604	13,629	26,492	2,271	-
2012	125	574	267	101	41	2012	161,027	915,344	506,955	172,675	74,919
Medicaid/Managed	90	269	106	17	0	Medicaid/Managed	120,569	468,613	214,550	27,844	-
Commercial	15	41	30	16	1	Commercial	22,617	84,941	61,318	29,674	942
Self-Pay/Uninsured	15	241	100	27	1	Self-Pay/Uninsured	11,299	333,523	170,476	43,969	-
Kidcare	1	0	0	0	0	Kidcare	2,952	-	-	-	-
Medicare/Managed	0	11	26	23	38	Medicare/Managed	-	15,087	53,543	45,180	72,613
All Other	4	12	5	18	1	All Other	3,590	13,180	7,068	26,008	1,364

Visits for Young Children for Preventable Conditions



Charges for Young Children for Preventable Conditions



Highest ED Dental ACS Visits by Zip Code

Zip Code	2011		2012	
	Visits	Charges	Visits	Charges
34601	228	282,979	239	413,743
34606	193	222,528	199	341,314
34609	169	216,346	192	327,176
34608	169	226,747	163	258,320
34613	113	154,925	112	184,229
34604	75	95,394	67	97,950
34614	40	52,762	50	77,242
34607	40	47,831	31	45,406
34602	34	38,840	45	76,616
34605	4	4,312	1	400

Policy Indicators

Indicators to consider in shaping policies to increase the overall health of Floridians while decreasing costs to the state's healthcare system:

- High numbers of Medicaid patients visiting the ER for ACS dental problems suggest a lack of access to dentists or oral healthcare clinics accepting Medicaid for both preventative care and for treatment.
- ER visits during the regular work day and traditional business hours, combined with ACS diagnoses, suggest visits being made to the ER in lieu of a clinic or dental office.
- Rates of adult tooth decay are higher in older adults yet patients aged 20 to 34 years comprise the largest segment of ER visits, suggesting that lack of dental insurance or an inability to meet high co-pays is driving such visits.

¹ Source: Emergency Room Database, Florida Agency on Health Care Administration

² Ambulatory care sensitive dental conditions, i.e. "preventable condition," are based on the ICD-9 (International Classification of Diseases, 9th Edition) codes from the published work of Dr. John Billings (http://wagner.nyu.edu/files/admissions/acs_codes.pdf).