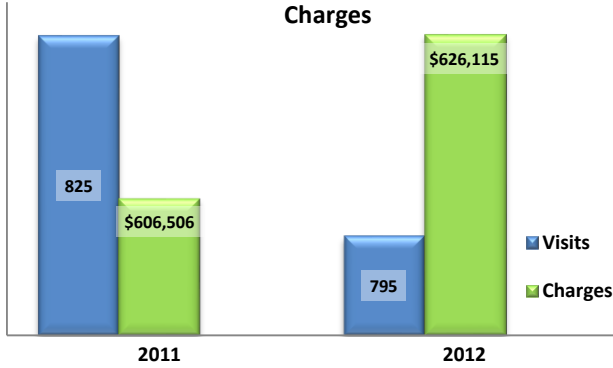


**Emergency Department Dental Visits & Charges**

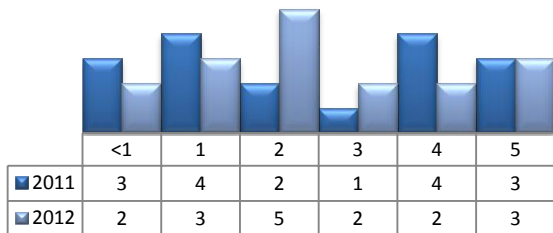


Ambulatory Care Sensitive oral health conditions (ACS) are those considered largely avoidable with adequate prevention and primary care. The use of hospital emergency departments – among the most expensive form of medical care – for the treatment of ACS conditions may indicate lack of access to primary dental care. Among the reasons Floridians do not receive regular preventive care include lack of dental coverage for adult Medicaid patients, lack of private-practice dentists willing to accept Medicaid's low payment rates, lack of county health department resources, lack of affordable dental insurance or inability to meet high co-pays, and lack of awareness of the importance of dental health to overall health.

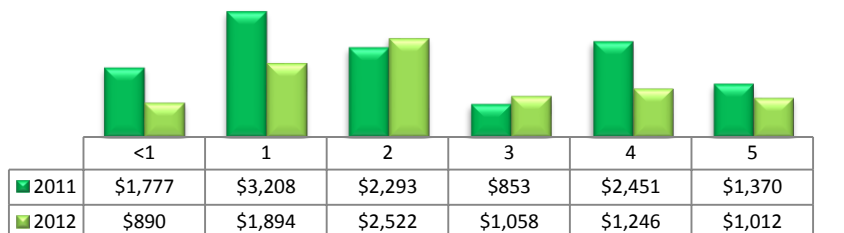
Floridians absorb the cost of Medicaid and uninsured ER dental visits in several ways including higher health insurance premiums and healthcare costs, increased tax dollars needed to fund the state Medicaid program, increased local tax dollars to support local public hospitals, and lost productivity.

Visits by Payor & Age						Charges by Payor & Age					
	0-19	19-34	35-49	50-64	65+		0-19	20-34	35-49	50-64	65+
<b>2011</b>	<b>76</b>	<b>465</b>	<b>177</b>	<b>82</b>	<b>25</b>	<b>2011</b>	<b>54,238</b>	<b>295,927</b>	<b>133,129</b>	<b>93,243</b>	<b>29,969</b>
Medicaid/Managed	57	254	72	14	0	Medicaid/Managed	42,735	155,486	40,924	12,320	-
Commercial	5	18	18	13	0	Commercial	4,172	9,432	15,899	15,678	-
Self-Pay/Uninsured	13	166	63	22	2	Self-Pay/Uninsured	6,700	112,368	54,701	25,445	1,180
Kidcare	1	0	0	0	0	Kidcare	631	-	-	-	-
Medicare/Managed	0	23	23	30	23	Medicare/Managed	-	14,275	20,614	33,811	28,789
All Other	0	4	1	3	0	All Other	-	4,366	991	5,989	-
<b>2012</b>	<b>102</b>	<b>415</b>	<b>157</b>	<b>83</b>	<b>38</b>	<b>2012</b>	<b>65,768</b>	<b>313,858</b>	<b>139,806</b>	<b>64,780</b>	<b>41,903</b>
Medicaid/Managed	76	225	69	23	0	Medicaid/Managed	46,072	156,414	53,714	18,442	-
Commercial	4	27	7	9	1	Commercial	3,738	19,768	4,842	6,505	551
Self-Pay/Uninsured	15	130	55	23	0	Self-Pay/Uninsured	10,938	115,316	57,288	19,640	-
Kidcare	1	0	0	0	0	Kidcare	623	-	-	-	-
Medicare/Managed	6	30	24	23	36	Medicare/Managed	4,397	20,857	22,752	14,994	40,931
All Other	0	3	2	5	1	All Other	-	1,503	1,210	5,199	421

**Visits for Young Children for Preventable Conditions**



**Charges for Young Children for Preventable Conditions**



**Highest ED Dental ACS Visits by Zip Code**

Zip Code	2011		2012	
	Visits	Charges	Visits	Charges
33870	260	197,479	294	262,071
33825	224	143,395	210	161,116
33852	145	98,985	134	85,106
33872	55	55,661	34	24,452
33875	45	28,621	48	35,853
33876	41	37,080	32	27,066
33862	19	16,560	12	7,168
33960	15	8,640	7	5,153
33857	8	12,411	11	7,441
33826	7	3,743	9	8,509

**Policy Indicators**

Indicators to consider in shaping policies to increase the overall health of Floridians while decreasing costs to the state's healthcare system:

- High numbers of Medicaid patients visiting the ER for ACS dental problems suggest a lack of access to dentists or oral healthcare clinics accepting Medicaid for both preventative care and for treatment.
- ER visits during the regular work day and traditional business hours, combined with ACS diagnoses, suggest visits being made to the ER in lieu of a clinic or dental office.
- Rates of adult tooth decay are higher in older adults yet patients aged 20 to 34 years comprise the largest segment of ER visits, suggesting that lack of dental insurance or an inability to meet high co-pays is driving such visits.

<sup>1</sup> Source: Emergency Room Database, Florida Agency on Health Care Administration

<sup>2</sup> Ambulatory care sensitive dental conditions, i.e. "preventable condition," are based on the ICD-9 (International Classification of Diseases, 9th Edition) codes from the published work of Dr. John Billings ([http://wagner.nyu.edu/files/admissions/acs\\_codes.pdf](http://wagner.nyu.edu/files/admissions/acs_codes.pdf)).