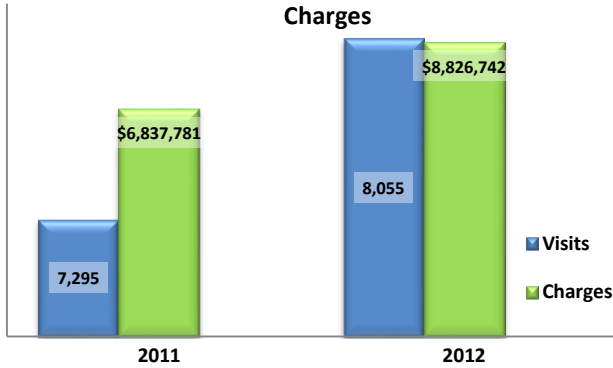


**Emergency Department Dental Visits & Charges**

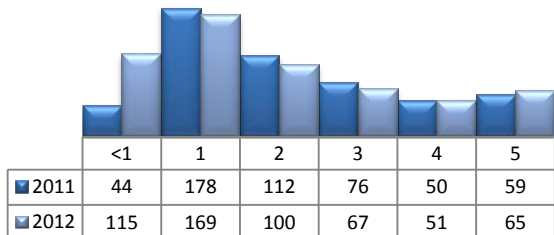


Ambulatory Care Sensitive oral health conditions (ACS) are those considered largely avoidable with adequate prevention and primary care. The use of hospital emergency departments – among the most expensive form of medical care – for the treatment of ACS conditions may indicate lack of access to primary dental care. Among the reasons Floridians do not receive regular preventive care include lack of dental coverage for adult Medicaid patients, lack of private-practice dentists willing to accept Medicaid’s low payment rates, lack of county health department resources, lack of affordable dental insurance or inability to meet high co-pays, and lack of awareness of the importance of dental health to overall health.

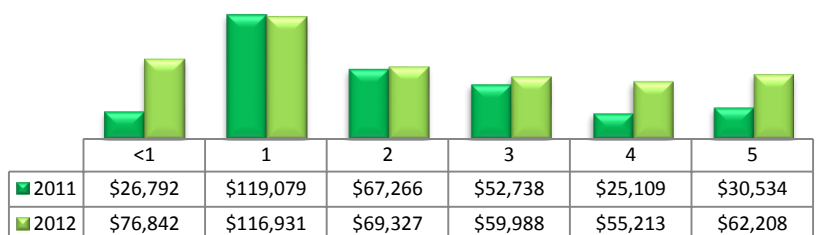
Floridians absorb the cost of Medicaid and uninsured ER dental visits in several ways including higher health insurance premiums and healthcare costs, increased tax dollars needed to fund the state Medicaid program, increased local tax dollars to support local public hospitals, and lost productivity.

Visits by Payor & Age						Charges by Payor & Age					
	0-19	19-34	35-49	50-64	65+		0-19	20-34	35-49	50-64	65+
<b>2011</b>	<b>1,176</b>	<b>3,838</b>	<b>1,600</b>	<b>570</b>	<b>111</b>	<b>2011</b>	<b>816,937</b>	<b>3,425,892</b>	<b>1,672,470</b>	<b>774,871</b>	<b>147,611</b>
Medicaid/Managed	818	1,477	363	116	2	Medicaid/Managed	552,440	1,239,360	353,609	143,479	8,242
Commercial	103	332	217	89	9	Commercial	74,322	390,388	281,592	169,864	5,414
Self-Pay/Uninsured	186	1,356	559	141	8	Self-Pay/Uninsured	120,871	1,196,702	558,584	187,003	4,138
Kidcare	15	0	0	0	0	Kidcare	14,236	-	-	-	-
Medicare/Managed	0	93	177	110	91	Medicare/Managed	-	116,596	175,930	115,272	127,589
All Other	54	580	284	114	1	All Other	55,068	482,846	302,755	159,253	2,228
<b>2012</b>	<b>1,354</b>	<b>4,139</b>	<b>1,738</b>	<b>642</b>	<b>182</b>	<b>2012</b>	<b>1,185,559</b>	<b>4,307,903</b>	<b>2,182,002</b>	<b>859,890</b>	<b>291,388</b>
Medicaid/Managed	967	1,697	536	138	7	Medicaid/Managed	793,479	1,679,370	705,760	131,286	4,360
Commercial	134	352	223	97	4	Commercial	151,523	366,206	319,256	149,788	11,921
Self-Pay/Uninsured	197	1,748	668	171	11	Self-Pay/Uninsured	192,158	1,843,418	746,368	232,461	8,769
Kidcare	16	0	0	0	0	Kidcare	11,381	-	-	-	-
Medicare/Managed	0	77	132	150	159	Medicare/Managed	-	95,593	193,758	201,832	246,263
All Other	40	265	179	86	1	All Other	37,018	323,316	216,860	144,523	20,075

**Visits for Young Children for Preventable Conditions**



**Charges for Young Children for Preventable Conditions**



**Highest ED Dental ACS Visits by Zip Code**

Zip Code	2011		2012	
	Visits	Charges	Visits	Charges
33612	618	511,786	547	409,503
33610	454	383,759	543	568,879
33604	410	344,267	423	424,564
33614	373	214,473	381	295,689
33619	337	377,103	434	581,534
33563	321	149,701	337	178,287
33617	317	207,348	330	329,511
33613	295	269,219	346	329,377
33607	248	159,342	270	166,412

**Policy Indicators**

Indicators to consider in shaping policies to increase the overall health of Floridians while decreasing costs to the state’s healthcare system:

- High numbers of Medicaid patients visiting the ER for ACS dental problems suggest a lack of access to dentists or oral healthcare clinics accepting Medicaid for both preventative care and for treatment.
- ER visits during the regular work day and traditional business hours, combined with ACS diagnoses, suggest visits being made to the ER in lieu of a clinic or dental office.
- Rates of adult tooth decay are higher in older adults yet patients aged 20 to 34 years comprise the largest segment of ER visits, suggesting that lack of dental insurance or an inability to meet high co-pays is driving such visits.

<sup>1</sup> Source: Emergency Room Database, Florida Agency on Health Care Administration

<sup>2</sup> Ambulatory care sensitive dental conditions, i.e. "preventable condition," are based on the ICD-9 (International Classification of Diseases, 9th Edition) codes from the published work of Dr. John Billings [http://wagner.nyu.edu/files/admissions/acs\\_codes.pdf](http://wagner.nyu.edu/files/admissions/acs_codes.pdf).