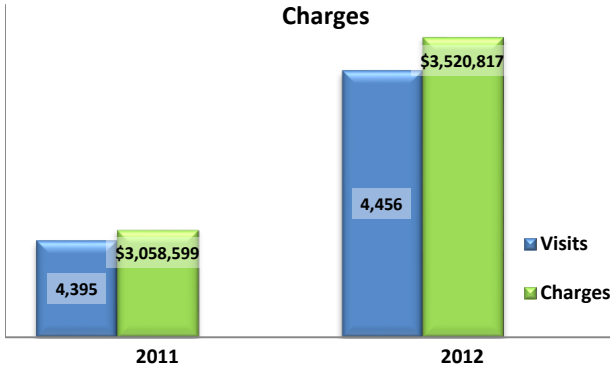


Emergency Department Dental Visits & Charges

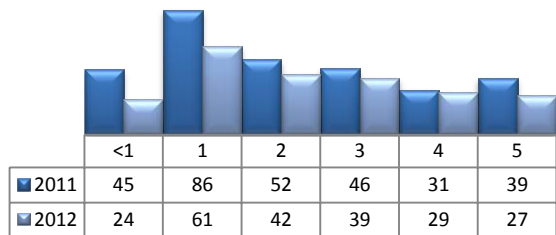


Ambulatory Care Sensitive oral health conditions (ACS) are those considered largely avoidable with adequate prevention and primary care. The use of hospital emergency departments – among the most expensive form of medical care – for the treatment of ACS conditions may indicate lack of access to primary dental care. Among the reasons Floridians do not receive regular preventive care include lack of dental coverage for adult Medicaid patients, lack of private-practice dentists willing to accept Medicaid's low payment rates, lack of county health department resources, lack of affordable dental insurance or inability to meet high co-pays, and lack of awareness of the importance of dental health to overall health.

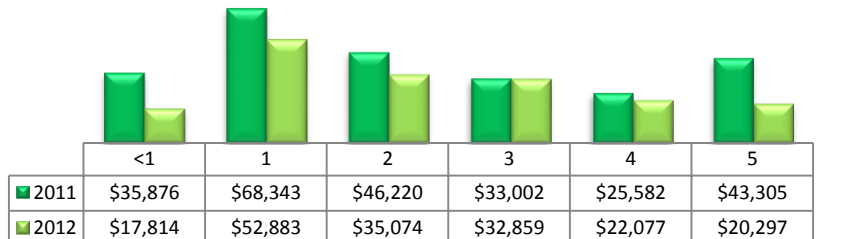
Floridians absorb the cost of Medicaid and uninsured ER dental visits in several ways including higher health insurance premiums and healthcare costs, increased tax dollars needed to fund the state Medicaid program, increased local tax dollars to support local public hospitals, and lost productivity.

Visits by Payor & Age						Charges by Payor & Age					
	0-19	19-34	35-49	50-64	65+		0-19	20-34	35-49	50-64	65+
2011	721	2,221	983	377	93	2011	526,740	1,397,366	722,797	307,746	103,950
Medicaid/Managed	521	880	299	72	2	Medicaid/Managed	377,851	579,375	225,110	51,440	1,548
Commercial	76	212	128	73	3	Commercial	69,571	147,705	109,984	62,956	1,210
Self-Pay/Uninsured	97	857	390	94	1	Self-Pay/Uninsured	50,908	512,939	275,938	87,738	873
Kidcare	1	0	0	0	0	Kidcare	253	-	-	-	-
Medicare/Managed	0	39	44	92	84	Medicare/Managed	-	27,156	31,867	80,220	96,450
All Other	26	233	122	46	3	All Other	28,157	130,191	79,898	25,392	3,869
2012	651	2,161	1,096	421	127	2012	516,008	1,533,705	935,110	393,264	142,730
Medicaid/Managed	485	830	336	79	2	Medicaid/Managed	383,879	595,649	283,051	65,691	1,357
Commercial	51	177	118	78	4	Commercial	40,940	149,266	113,916	69,768	2,384
Self-Pay/Uninsured	88	824	407	104	2	Self-Pay/Uninsured	63,105	562,008	337,549	99,310	1,020
Kidcare	3	0	0	0	0	Kidcare	3,032	-	-	-	-
Medicare/Managed	0	58	97	94	118	Medicare/Managed	-	56,597	81,347	93,950	135,356
All Other	24	272	138	66	1	All Other	25,052	170,185	119,247	64,545	2,613

Visits for Young Children for Preventable Conditions



Charges for Young Children for Preventable Conditions



Highest ED Dental ACS Visits by Zip Code

Zip Code	2011		2012	
	Visits	Charges	Visits	Charges
33916	413	283,798	440	301,965
33901	335	220,805	323	228,399
33917	287	189,368	307	203,629
33909	259	144,226	216	143,618
33905	245	176,840	302	261,702
33990	244	144,839	230	158,388
33936	218	194,989	205	199,007
33907	213	133,801	240	149,247
33971	206	179,898	192	198,659
33973	192	171,577	171	168,264

Policy Indicators

Indicators to consider in shaping policies to increase the overall health of Floridians while decreasing costs to the state's healthcare system:

- High numbers of Medicaid patients visiting the ER for ACS dental problems suggest a lack of access to dentists or oral healthcare clinics accepting Medicaid for both preventative care and for treatment.
- ER visits during the regular work day and traditional business hours, combined with ACS diagnoses, suggest visits being made to the ER in lieu of a clinic or dental office.
- Rates of adult tooth decay are higher in older adults yet patients aged 20 to 34 years comprise the largest segment of ER visits, suggesting that lack of dental insurance or an inability to meet high co-pays is driving such visits.

¹ Source: Emergency Room Database, Florida Agency on Health Care Administration

² Ambulatory care sensitive dental conditions, i.e. "preventable condition," are based on the ICD-9 (International Classification of Diseases, 9th Edition) codes from the published work of Dr. John Billings (http://wagner.nyu.edu/files/admissions/acs_codes.pdf).