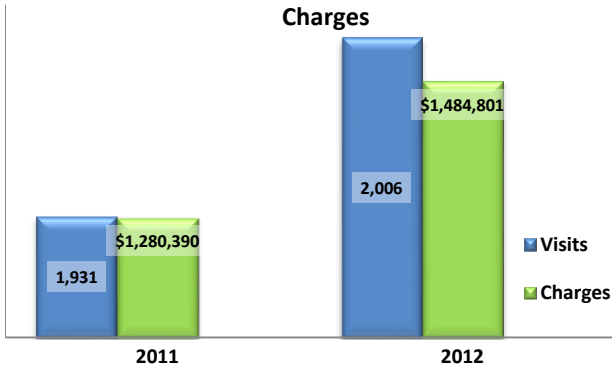


### Emergency Department Dental Visits & Charges

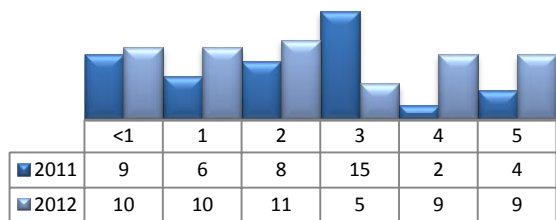


Ambulatory Care Sensitive oral health conditions (ACS) are those considered largely avoidable with adequate prevention and primary care. The use of hospital emergency departments – among the most expensive form of medical care – for the treatment of ACS conditions may indicate lack of access to primary dental care. Among the reasons Floridians do not receive regular preventive care include lack of dental coverage for adult Medicaid patients, lack of private-practice dentists willing to accept Medicaid's low payment rates, lack of county health department resources, lack of affordable dental insurance or inability to meet high co-pays, and lack of awareness of the importance of dental health to overall health.

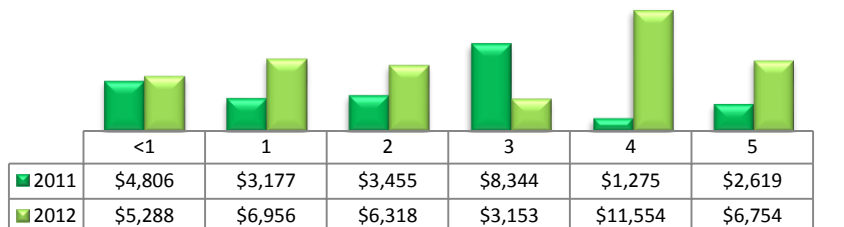
Floridians absorb the cost of Medicaid and uninsured ER dental visits in several ways including higher health insurance premiums and healthcare costs, increased tax dollars needed to fund the state Medicaid program, increased local tax dollars to support local public hospitals, and lost productivity.

Visits by Payor & Age						Charges by Payor & Age					
	0-19	19-34	35-49	50-64	65+		0-19	20-34	35-49	50-64	65+
<b>2011</b>	<b>172</b>	<b>1,108</b>	<b>448</b>	<b>178</b>	<b>25</b>	<b>2011</b>	<b>89,812</b>	<b>682,638</b>	<b>343,817</b>	<b>140,824</b>	<b>23,299</b>
Medicaid/Managed	88	337	89	26	1	Medicaid/Managed	47,488	193,722	63,086	19,524	281
Commercial	26	154	70	32	1	Commercial	16,620	116,657	65,569	44,527	577
Self-Pay/Uninsured	48	561	234	70	0	Self-Pay/Uninsured	21,666	341,604	180,733	44,829	-
Kidcare	2	0	0	0	0	Kidcare	840	-	-	-	-
Medicare/Managed	0	27	32	27	22	Medicare/Managed	-	15,572	19,424	14,654	21,637
All Other	8	29	23	23	1	All Other	3,198	15,083	15,005	17,290	804
<b>2012</b>	<b>171</b>	<b>1,187</b>	<b>463</b>	<b>155</b>	<b>30</b>	<b>2012</b>	<b>122,927</b>	<b>828,984</b>	<b>351,302</b>	<b>139,568</b>	<b>42,020</b>
Medicaid/Managed	108	401	115	34	0	Medicaid/Managed	81,838	294,387	73,965	31,895	-
Commercial	25	175	72	32	2	Commercial	18,228	136,391	56,616	33,805	5,369
Self-Pay/Uninsured	32	525	228	58	0	Self-Pay/Uninsured	16,877	345,907	177,736	48,648	-
Kidcare	3	0	0	0	0	Kidcare	4,558	-	-	-	-
Medicare/Managed	0	21	25	22	25	Medicare/Managed	-	15,587	28,200	18,808	35,089
All Other	3	65	23	9	3	All Other	1,426	36,712	14,785	6,412	1,562

### Visits for Young Children for Preventable Conditions



### Charges for Young Children for Preventable Conditions



### Highest ED Dental ACS Visits by Zip Code

Zip Code	2011		2012	
	Visits	Charges	Visits	Charges
32304	331	224,990	353	218,669
32301	318	170,470	264	191,942
32303	309	213,187	344	244,595
32305	284	166,028	292	222,476
32310	215	154,874	261	191,713
32308	148	93,472	166	127,397
32309	87	56,725	72	79,398
32311	78	76,381	72	57,825
32312	63	70,371	64	54,006
32317	44	24,038	56	44,102

### Policy Indicators

Indicators to consider in shaping policies to increase the overall health of Floridians while decreasing costs to the state's healthcare system:

- High numbers of Medicaid patients visiting the ER for ACS dental problems suggest a lack of access to dentists or oral healthcare clinics accepting Medicaid for both preventative care and for treatment.
- ER visits during the regular work day and traditional business hours, combined with ACS diagnoses, suggest visits being made to the ER in lieu of a clinic or dental office.
- Rates of adult tooth decay are higher in older adults yet patients aged 20 to 34 years comprise the largest segment of ER visits, suggesting that lack of dental insurance or an inability to meet high co-pays is driving such visits.

<sup>1</sup> Source: Emergency Room Database, Florida Agency on Health Care Administration

<sup>2</sup> Ambulatory care sensitive dental conditions, i.e. "preventable condition," are based on the ICD-9 (International Classification of Diseases, 9th Edition) codes from the published work of Dr. John Billings ([http://wagner.nyu.edu/files/admissions/acs\\_codes.pdf](http://wagner.nyu.edu/files/admissions/acs_codes.pdf)).