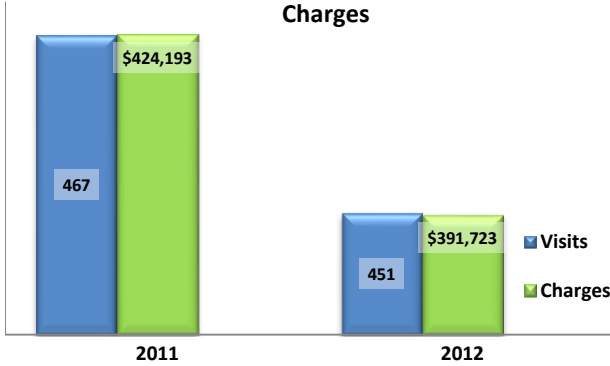


Emergency Department Dental Visits & Charges

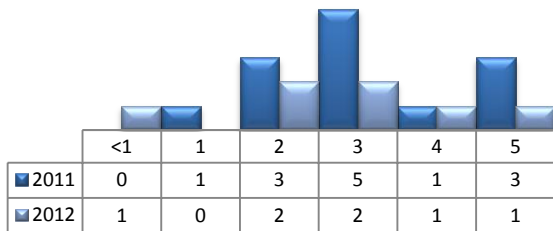


Ambulatory Care Sensitive oral health conditions (ACS) are those considered largely avoidable with adequate prevention and primary care. The use of hospital emergency departments – among the most expensive form of medical care – for the treatment of ACS conditions may indicate lack of access to primary dental care. Among the reasons Floridians do not receive regular preventive care include lack of dental coverage for adult Medicaid patients, lack of private-practice dentists willing to accept Medicaid’s low payment rates, lack of county health department resources, lack of affordable dental insurance or inability to meet high co-pays, and lack of awareness of the importance of dental health to overall health.

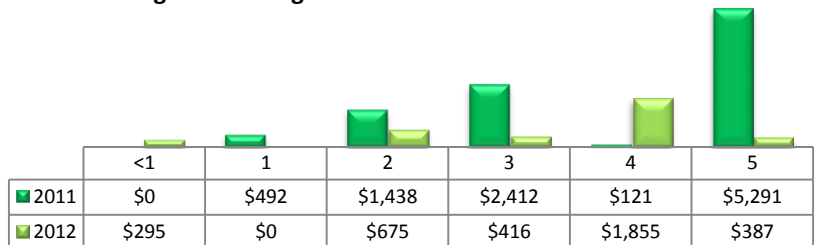
Floridians absorb the cost of Medicaid and uninsured ER dental visits in several ways including higher health insurance premiums and healthcare costs, increased tax dollars needed to fund the state Medicaid program, increased local tax dollars to support local public hospitals, and lost productivity.

Visits by Payor & Age						Charges by Payor & Age					
	0-19	19-34	35-49	50-64	65+		0-19	20-34	35-49	50-64	65+
2011	52	270	118	25	2	2011	48,200	217,842	96,876	38,723	22,552
Medicaid/Managed	31	122	33	12	0	Medicaid/Managed	32,931	63,581	20,506	13,467	-
Commercial	10	18	13	2	0	Commercial	12,476	9,942	7,115	15,942	-
Self-Pay/Uninsured	10	118	59	5	0	Self-Pay/Uninsured	2,487	129,834	37,345	5,741	-
Kidcare	1	0	0	0	0	Kidcare	306	-	-	-	-
Medicare/Managed	0	7	12	6	2	Medicare/Managed	-	3,041	15,760	3,573	22,552
All Other	0	5	1	0	0	All Other	-	11,444	16,150	-	-
2012	42	251	111	39	8	2012	26,907	190,910	109,778	58,220	5,908
Medicaid/Managed	27	106	34	2	1	Medicaid/Managed	19,772	95,138	47,297	1,378	225
Commercial	7	35	16	9	0	Commercial	1,776	16,499	10,211	18,549	-
Self-Pay/Uninsured	7	105	49	16	0	Self-Pay/Uninsured	5,064	76,564	44,656	24,415	-
Medicare/Managed	0	4	11	10	7	Medicare/Managed	-	2,414	6,688	10,380	5,683
All Other	1	1	1	2	0	All Other	295	295	926	3,498	-

Visits for Young Children for Preventable Conditions



Charges for Young Children for Preventable Conditions



Highest ED Dental ACS Visits by Zip Code

Zip Code	2011		2012	
	Visits	Charges	Visits	Charges
32696	151	68,851	179	124,853
32621	103	164,536	89	68,190
32626	81	83,800	61	75,009
32668	56	28,055	49	20,347
34449	42	39,628	52	68,732
32644	13	14,509	7	8,091
32625	9	15,371	7	6,826
34498	6	5,694	6	18,776
32683	3	1,125	-	0

Policy Indicators

Indicators to consider in shaping policies to increase the overall health of Floridians while decreasing costs to the state’s healthcare system:

- High numbers of Medicaid patients visiting the ER for ACS dental problems suggest a lack of access to dentists or oral healthcare clinics accepting Medicaid for both preventative care and for treatment.
- ER visits during the regular work day and traditional business hours, combined with ACS diagnoses, suggest visits being made to the ER in lieu of a clinic or dental office.
- Rates of adult tooth decay are higher in older adults yet patients aged 20 to 34 years comprise the largest segment of ER visits, suggesting that lack of dental insurance or an inability to meet high co-pays is driving such visits.

¹ Source: Emergency Room Database, Florida Agency on Health Care Administration

² Ambulatory care sensitive dental conditions, i.e. "preventable condition," are based on the ICD-9 (International Classification of Diseases, 9th Edition) codes from the published work of Dr. John Billings http://wagner.nyu.edu/files/admissions/acs_codes.pdf.