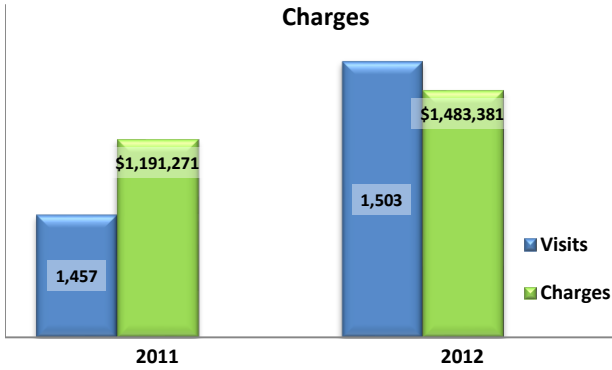


Emergency Department Dental Visits & Charges

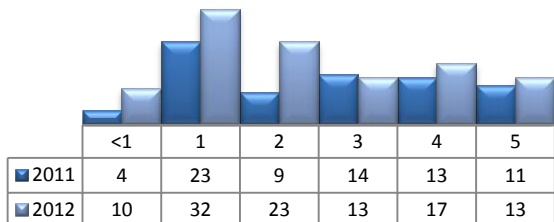


Ambulatory Care Sensitive oral health conditions (ACS) are those considered largely avoidable with adequate prevention and primary care. The use of hospital emergency departments – among the most expensive form of medical care – for the treatment of ACS conditions may indicate lack of access to primary dental care. Among the reasons Floridians do not receive regular preventive care include lack of dental coverage for adult Medicaid patients, lack of private-practice dentists willing to accept Medicaid's low payment rates, lack of county health department resources, lack of affordable dental insurance or inability to meet high co-pays, and lack of awareness of the importance of dental health to overall health.

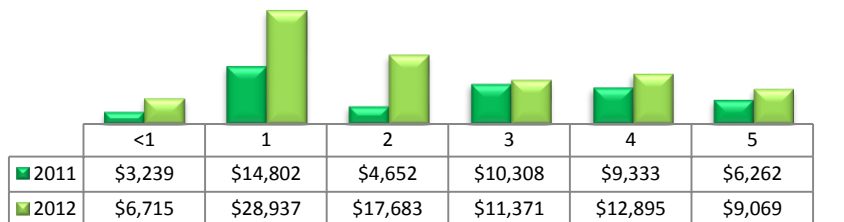
Floridians absorb the cost of Medicaid and uninsured ER dental visits in several ways including higher health insurance premiums and healthcare costs, increased tax dollars needed to fund the state Medicaid program, increased local tax dollars to support local public hospitals, and lost productivity.

Visits by Payor & Age						Charges by Payor & Age					
	0-19	19-34	35-49	50-64	65+		0-19	20-34	35-49	50-64	65+
2011	205	743	326	142	41	2011	135,789	556,832	310,745	133,804	54,101
Medicaid/Managed	133	273	109	21	0	Medicaid/Managed	87,874	192,175	105,047	18,009	-
Commercial	36	65	42	39	0	Commercial	24,751	64,820	43,246	37,538	-
Self-Pay/Uninsured	31	316	135	31	1	Self-Pay/Uninsured	18,580	232,545	127,262	22,735	619
Medicare/Managed	0	10	17	32	40	Medicare/Managed	-	7,196	14,996	39,786	53,482
All Other	5	79	23	19	0	All Other	4,584	60,096	20,194	15,736	-
2012	236	765	340	108	54	2012	210,916	711,038	378,002	103,249	80,176
Medicaid/Managed	184	316	104	12	0	Medicaid/Managed	157,597	298,075	120,773	15,466	-
Commercial	19	55	46	27	5	Commercial	20,489	49,962	85,464	24,209	5,625
Self-Pay/Uninsured	27	335	133	34	0	Self-Pay/Uninsured	26,475	306,469	124,024	28,965	-
Kidcare	2	0	0	0	0	Kidcare	1,495	-	-	-	-
Medicare/Managed	0	14	32	20	47	Medicare/Managed	-	12,334	27,697	18,084	70,357
All Other	4	45	25	15	2	All Other	4,860	44,198	20,044	16,525	4,194

Visits for Young Children for Preventable Conditions



Charges for Young Children for Preventable Conditions



Highest ED Dental ACS Visits by Zip Code

Zip Code	2011		2012	
	Visits	Charges	Visits	Charges
34205	277	224,716	332	300,487
34207	253	200,490	248	287,748
34208	241	184,570	238	220,976
34221	154	123,088	153	134,894
34203	134	111,968	145	153,695
34243	81	67,941	65	61,868
34209	72	48,661	82	83,004
34210	46	42,548	64	70,355
34222	30	20,693	38	36,819
34219	27	24,097	27	23,091

Policy Indicators

Indicators to consider in shaping policies to increase the overall health of Floridians while decreasing costs to the state's healthcare system:

- High numbers of Medicaid patients visiting the ER for ACS dental problems suggest a lack of access to dentists or oral healthcare clinics accepting Medicaid for both preventative care and for treatment.
- ER visits during the regular work day and traditional business hours, combined with ACS diagnoses, suggest visits being made to the ER in lieu of a clinic or dental office.
- Rates of adult tooth decay are higher in older adults yet patients aged 20 to 34 years comprise the largest segment of ER visits, suggesting that lack of dental insurance or an inability to meet high co-pays is driving such visits.

¹ Source: Emergency Room Database, Florida Agency on Health Care Administration

² Ambulatory care sensitive dental conditions, i.e. "preventable condition," are based on the ICD-9 (International Classification of Diseases, 9th Edition) codes from the published work of Dr. John Billings (http://wagner.nyu.edu/files/admissions/acs_codes.pdf).