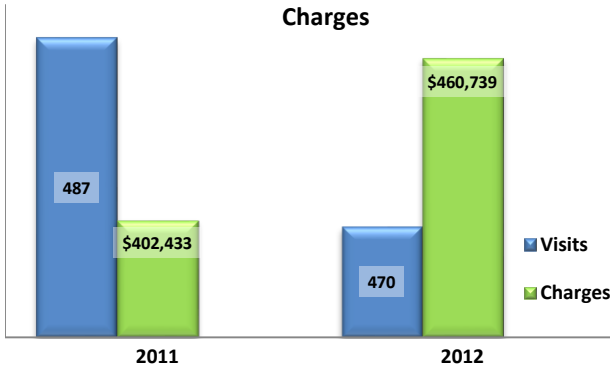


Emergency Department Dental Visits & Charges

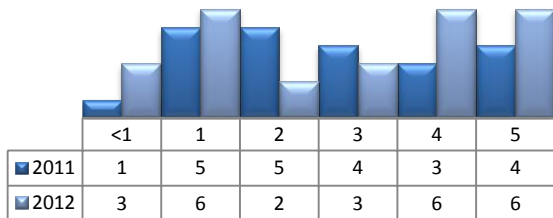


Ambulatory Care Sensitive oral health conditions (ACS) are those considered largely avoidable with adequate prevention and primary care. The use of hospital emergency departments – among the most expensive form of medical care – for the treatment of ACS conditions may indicate lack of access to primary dental care. Among the reasons Floridians do not receive regular preventive care include lack of dental coverage for adult Medicaid patients, lack of private-practice dentists willing to accept Medicaid's low payment rates, lack of county health department resources, lack of affordable dental insurance or inability to meet high co-pays, and lack of awareness of the importance of dental health to overall health.

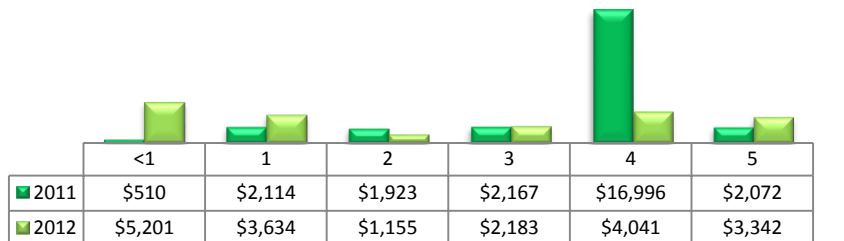
Floridians absorb the cost of Medicaid and uninsured ER dental visits in several ways including higher health insurance premiums and healthcare costs, increased tax dollars needed to fund the state Medicaid program, increased local tax dollars to support local public hospitals, and lost productivity.

Visits by Payor & Age						Charges by Payor & Age					
	0-19	19-34	35-49	50-64	65+		0-19	20-34	35-49	50-64	65+
2011	58	276	111	35	7	2011	56,305	182,275	113,320	37,026	13,507
Medicaid/Managed	47	118	37	12	0	Medicaid/Managed	44,108	78,968	37,542	8,205	-
Commercial	2	12	8	5	1	Commercial	7,751	15,847	5,001	3,470	510
Self-Pay/Uninsured	7	139	53	12	1	Self-Pay/Uninsured	2,823	82,834	50,732	7,599	510
Medicare/Managed	0	4	12	4	5	Medicare/Managed	-	3,067	18,947	3,446	12,487
All Other	2	3	1	2	0	All Other	1,623	1,559	1,098	14,306	-
2012	69	232	108	51	10	2012	73,239	203,488	101,529	67,635	14,848
Medicaid/Managed	53	97	20	14	0	Medicaid/Managed	56,350	94,661	23,390	9,464	-
Commercial	3	20	13	6	0	Commercial	2,207	14,680	17,258	6,830	-
Self-Pay/Uninsured	8	97	56	20	0	Self-Pay/Uninsured	11,322	81,527	40,969	29,559	-
Medicare/Managed	0	4	11	8	10	Medicare/Managed	-	3,302	10,052	13,309	14,848
All Other	5	14	8	3	0	All Other	3,360	9,318	9,860	8,473	-

Visits for Young Children for Preventable Conditions



Charges for Young Children for Preventable Conditions



Highest ED Dental ACS Visits by Zip Code

Zip Code	2011		2012	
	Visits	Charges	Visits	Charges
34972	242	208,059	214	185,694
34974	238	185,249	254	273,537
34973	7	9,125	2	1,508

Policy Indicators

Indicators to consider in shaping policies to increase the overall health of Floridians while decreasing costs to the state's healthcare system:

- High numbers of Medicaid patients visiting the ER for ACS dental problems suggest a lack of access to dentists or oral healthcare clinics accepting Medicaid for both preventative care and for treatment.
- ER visits during the regular work day and traditional business hours, combined with ACS diagnoses, suggest visits being made to the ER in lieu of a clinic or dental office.
- Rates of adult tooth decay are higher in older adults yet patients aged 20 to 34 years comprise the largest segment of ER visits, suggesting that lack of dental insurance or an inability to meet high co-pays is driving such visits.

¹ Source: Emergency Room Database, Florida Agency on Health Care Administration

² Ambulatory care sensitive dental conditions, i.e. "preventable condition," are based on the ICD-9 (International Classification of Diseases, 9th Edition) codes from the published work of Dr. John Billings http://wagner.nyu.edu/files/admissions/acs_codes.pdf.