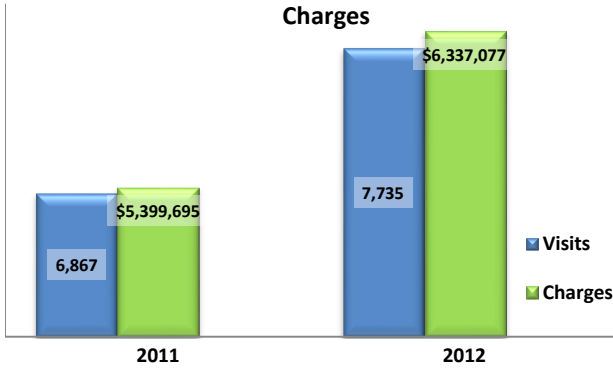


Emergency Department Dental Visits & Charges

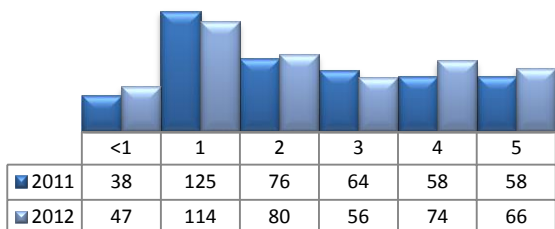


Ambulatory Care Sensitive oral health conditions (ACS) are those considered largely avoidable with adequate prevention and primary care. The use of hospital emergency departments – among the most expensive form of medical care – for the treatment of ACS conditions may indicate lack of access to primary dental care. Among the reasons Floridians do not receive regular preventive care include lack of dental coverage for adult Medicaid patients, lack of private-practice dentists willing to accept Medicaid's low payment rates, lack of county health department resources, lack of affordable dental insurance or inability to meet high co-pays, and lack of awareness of the importance of dental health to overall health.

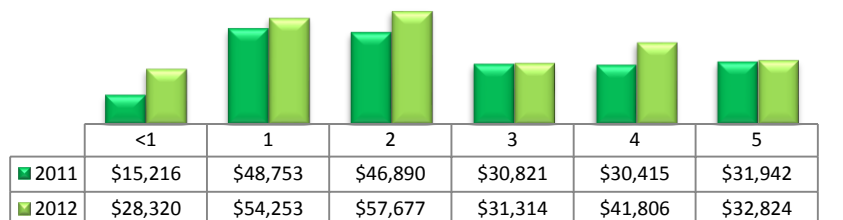
Floridians absorb the cost of Medicaid and uninsured ER dental visits in several ways including higher health insurance premiums and healthcare costs, increased tax dollars needed to fund the state Medicaid program, increased local tax dollars to support local public hospitals, and lost productivity.

Visits by Payor & Age						Charges by Payor & Age					
	0-19	19-34	35-49	50-64	65+		0-19	20-34	35-49	50-64	65+
2011	1,003	3,514	1,595	627	128	2011	590,517	2,637,647	1,402,981	580,853	187,697
Medicaid/Managed	613	1,046	368	104	3	Medicaid/Managed	342,540	768,678	321,628	108,572	1,345
Commercial	89	326	225	93	4	Commercial	61,330	286,479	285,375	115,259	32,980
Self-Pay/Uninsured	186	1,879	822	233	1	Self-Pay/Uninsured	102,748	1,355,641	648,890	190,378	286
Kidcare	44	71	34	5	0	Kidcare	43,765	52,524	17,458	2,420	-
Medicare/Managed	2	79	95	173	120	Medicare/Managed	565	62,485	84,817	142,673	153,086
All Other	69	113	51	19	0	All Other	39,569	111,840	44,813	21,551	-
2012	1,137	4,034	1,777	636	151	2012	749,321	3,059,580	1,574,753	767,434	185,989
Medicaid/Managed	748	1,307	462	105	4	Medicaid/Managed	481,448	956,423	390,496	120,833	4,349
Commercial	113	430	250	103	4	Commercial	105,423	379,374	325,407	168,341	5,385
Self-Pay/Uninsured	207	2,078	875	248	10	Self-Pay/Uninsured	112,086	1,487,786	638,359	279,836	18,116
Kidcare	37	17	8	1	0	Kidcare	20,860	12,036	4,436	304	-
Medicare/Managed	0	80	118	144	133	Medicare/Managed	-	63,895	102,627	140,567	158,139
All Other	32	122	64	35	0	All Other	29,504	160,066	113,428	57,553	-

Visits for Young Children for Preventable Conditions



Charges for Young Children for Preventable Conditions



Highest ED Dental ACS Visits by Zip Code

Zip Code	2011		2012	
	Visits	Charges	Visits	Charges
32808	606	485,955	701	633,667
32703	506	293,602	576	400,419
32839	468	305,484	509	376,219
32805	402	356,244	411	321,895
32811	395	326,578	434	401,682
32822	355	305,717	447	316,172
32818	355	299,135	403	329,005
32810	280	201,093	341	269,070
32807	275	178,912	284	237,163

Policy Indicators

Indicators to consider in shaping policies to increase the overall health of Floridians while decreasing costs to the state's healthcare system:

- High numbers of Medicaid patients visiting the ER for ACS dental problems suggest a lack of access to dentists or oral healthcare clinics accepting Medicaid for both preventative care and for treatment.
- ER visits during the regular work day and traditional business hours, combined with ACS diagnoses, suggest visits being made to the ER in lieu of a clinic or dental office.
- Rates of adult tooth decay are higher in older adults yet patients aged 20 to 34 years comprise the largest segment of ER visits, suggesting that lack of dental insurance or an inability to meet high co-pays is driving such visits.

¹ Source: Emergency Room Database, Florida Agency on Health Care Administration

² Ambulatory care sensitive dental conditions, i.e. "preventable condition," are based on the ICD-9 (International Classification of Diseases, 9th Edition) codes from the published work of Dr. John Billings http://wagner.nyu.edu/files/admissions/acs_codes.pdf.