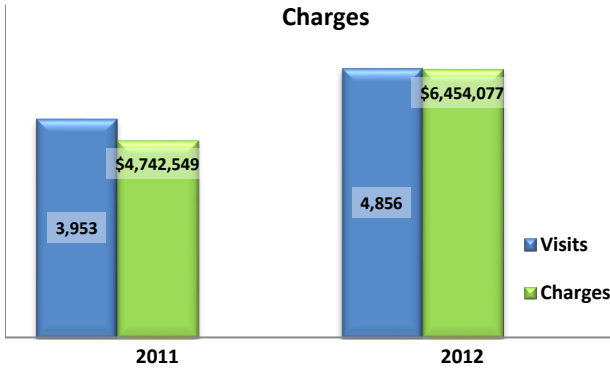


**Emergency Department Dental Visits & Charges**

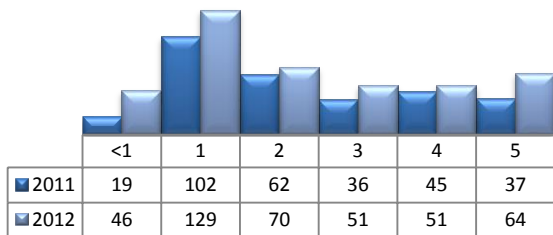


Ambulatory Care Sensitive oral health conditions (ACS) are those considered largely avoidable with adequate prevention and primary care. The use of hospital emergency departments – among the most expensive form of medical care – for the treatment of ACS conditions may indicate lack of access to primary dental care. Among the reasons Floridians do not receive regular preventive care include lack of dental coverage for adult Medicaid patients, lack of private-practice dentists willing to accept Medicaid's low payment rates, lack of county health department resources, lack of affordable dental insurance or inability to meet high co-pays, and lack of awareness of the importance of dental health to overall health.

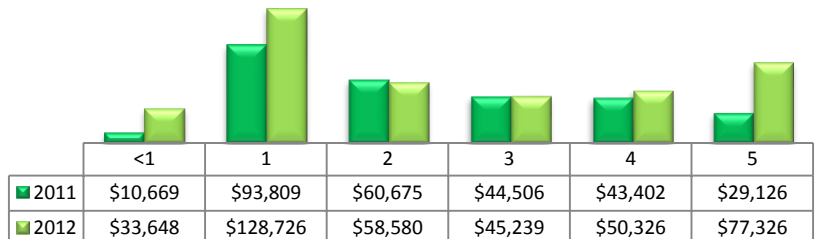
Floridians absorb the cost of Medicaid and uninsured ER dental visits in several ways including higher health insurance premiums and healthcare costs, increased tax dollars needed to fund the state Medicaid program, increased local tax dollars to support local public hospitals, and lost productivity.

Visits by Payor & Age						Charges by Payor & Age					
	0-19	19-34	35-49	50-64	65+		0-19	20-34	35-49	50-64	65+
<b>2011</b>	<b>665</b>	<b>1,815</b>	<b>888</b>	<b>417</b>	<b>168</b>	<b>2011</b>	<b>793,029</b>	<b>2,060,317</b>	<b>1,004,422</b>	<b>607,039</b>	<b>277,742</b>
Medicaid/Managed	405	471	204	68	5	Medicaid/Managed	515,335	566,440	222,960	109,648	9,022
Commercial	91	220	138	99	12	Commercial	107,389	271,860	185,672	162,841	10,269
Self-Pay/Uninsured	125	952	369	124	8	Self-Pay/Uninsured	131,409	1,061,732	396,822	192,218	16,513
Kidcare	12	1	1	0	0	Kidcare	14,969	1,275	667	-	-
Medicare/Managed	1	55	68	68	142	Medicare/Managed	605	54,065	72,639	89,678	241,938
All Other	31	116	108	58	1	All Other	23,322	104,945	125,662	52,654	-
<b>2012</b>	<b>875</b>	<b>2,167</b>	<b>1,075</b>	<b>508</b>	<b>231</b>	<b>2012</b>	<b>1,012,096</b>	<b>2,630,387</b>	<b>1,462,685</b>	<b>904,785</b>	<b>444,124</b>
Medicaid/Managed	564	628	276	95	3	Medicaid/Managed	636,482	779,852	318,994	127,427	2,746
Commercial	120	278	149	117	14	Commercial	186,909	396,176	277,548	250,785	21,186
Self-Pay/Uninsured	124	1,063	444	183	14	Self-Pay/Uninsured	116,045	1,231,055	599,968	334,031	29,381
Kidcare	9	0	1	1	0	Kidcare	12,065	-	182	776	-
Medicare/Managed	0	54	81	64	200	Medicare/Managed	-	71,509	93,001	105,931	390,811
All Other	58	144	124	48	0	All Other	60,595	151,795	172,992	85,835	-

**Visits for Young Children for Preventable Conditions**



**Charges for Young Children for Preventable Conditions**



**Highest ED Dental ACS Visits by Zip Code**

Zip Code	2011		2012	
	Visits	Charges	Visits	Charges
33407	314	302,672	380	487,810
33404	265	272,464	298	399,412
33430	192	172,681	174	163,668
33401	182	206,253	223	288,455
33461	179	269,445	219	334,158
33411	159	184,368	190	254,026
33460	151	160,796	208	345,493
33415	140	223,517	198	268,086
33463	139	221,783	196	311,722

**Policy Indicators**

Indicators to consider in shaping policies to increase the overall health of Floridians while decreasing costs to the state's healthcare system:

- High numbers of Medicaid patients visiting the ER for ACS dental problems suggest a lack of access to dentists or oral healthcare clinics accepting Medicaid for both preventative care and for treatment.
- ER visits during the regular work day and traditional business hours, combined with ACS diagnoses, suggest visits being made to the ER in lieu of a clinic or dental office.
- Rates of adult tooth decay are higher in older adults yet patients aged 20 to 34 years comprise the largest segment of ER visits, suggesting that lack of dental insurance or an inability to meet high co-pays is driving such visits.

<sup>1</sup> Source: Emergency Room Database, Florida Agency on Health Care Administration

<sup>2</sup> Ambulatory care sensitive dental conditions, i.e. "preventable condition," are based on the ICD-9 (International Classification of Diseases, 9th Edition) codes from the published work of Dr. John Billings [http://wagner.nyu.edu/files/admissions/acs\\_codes.pdf](http://wagner.nyu.edu/files/admissions/acs_codes.pdf).