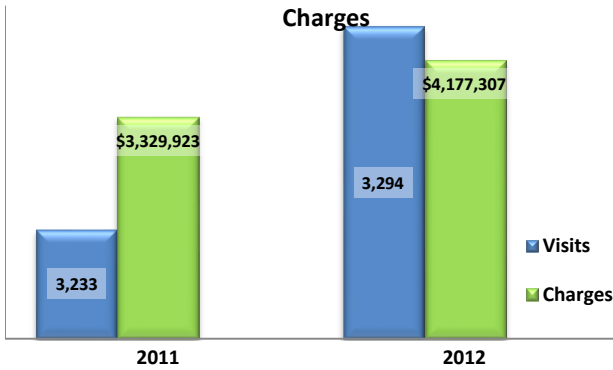


Emergency Department Dental Visits & Charges

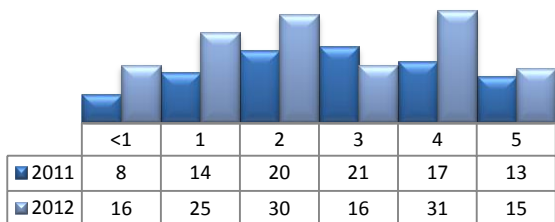


Ambulatory Care Sensitive oral health conditions (ACS) are those considered largely avoidable with adequate prevention and primary care. The use of hospital emergency departments – among the most expensive form of medical care – for the treatment of ACS conditions may indicate lack of access to primary dental care. Among the reasons Floridians do not receive regular preventive care include lack of dental coverage for adult Medicaid patients, lack of private-practice dentists willing to accept Medicaid’s low payment rates, lack of county health department resources, lack of affordable dental insurance or inability to meet high co-pays, and lack of awareness of the importance of dental health to overall health.

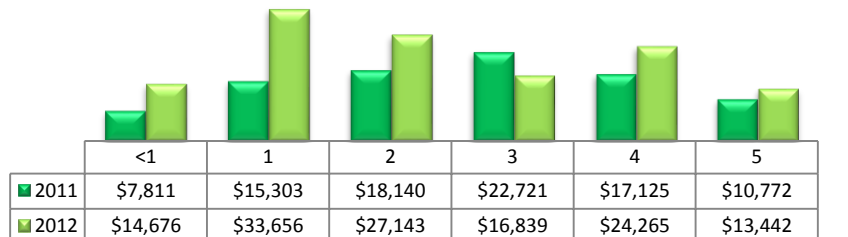
Floridians absorb the cost of Medicaid and uninsured ER dental visits in several ways including higher health insurance premiums and healthcare costs, increased tax dollars needed to fund the state Medicaid program, increased local tax dollars to support local public hospitals, and lost productivity.

Visits by Payor & Age						Charges by Payor & Age					
	0-19	19-34	35-49	50-64	65+		0-19	20-34	35-49	50-64	65+
2011	348	1,735	839	254	57	2011	351,861	1,620,912	910,684	355,827	90,639
Medicaid/Managed	245	689	262	59	1	Medicaid/Managed	259,563	716,986	287,857	85,165	697
Commercial	29	121	97	38	2	Commercial	37,953	116,632	116,889	95,962	1,009
Self-Pay/Uninsured	62	831	363	98	2	Self-Pay/Uninsured	40,020	694,885	358,232	90,526	2,894
Kidcare	7	2	1	0	0	Kidcare	6,802	2,270	1,135	-	-
Medicare/Managed	0	45	89	47	50	Medicare/Managed	-	39,281	97,153	72,125	78,986
All Other	5	47	27	12	2	All Other	7,523	50,858	49,418	12,049	7,053
2012	371	1,754	824	256	89	2012	382,249	2,003,888	1,165,240	422,823	203,107
Medicaid/Managed	244	762	306	51	0	Medicaid/Managed	265,357	850,010	381,627	77,382	-
Commercial	42	104	71	43	2	Commercial	47,743	119,094	170,772	101,431	7,013
Self-Pay/Uninsured	67	795	335	94	11	Self-Pay/Uninsured	54,467	839,118	379,307	155,222	29,296
Kidcare	10	0	1	0	0	Kidcare	8,112	-	495	-	-
Medicare/Managed	0	40	85	53	76	Medicare/Managed	-	33,675	166,542	62,063	166,798
All Other	8	53	26	15	0	All Other	6,570	161,991	66,497	26,725	-

Visits for Young Children for Preventable Conditions



Charges for Young Children for Preventable Conditions



Highest ED Dental ACS Visits by Zip Code

Zip Code	2011		2012	
	Visits	Charges	Visits	Charges
34668	430	477,063	402	596,906
34653	273	218,072	321	294,042
34652	262	237,301	277	253,245
34667	251	352,404	252	468,848
33542	233	173,911	223	181,446
34691	225	224,915	218	239,082
33523	217	265,211	189	246,798
33525	183	210,714	192	245,339
33541	148	123,685	139	145,786

Policy Indicators

Indicators to consider in shaping policies to increase the overall health of Floridians while decreasing costs to the state’s healthcare system:

- High numbers of Medicaid patients visiting the ER for ACS dental problems suggest a lack of access to dentists or oral healthcare clinics accepting Medicaid for both preventative care and for treatment.
- ER visits during the regular work day and traditional business hours, combined with ACS diagnoses, suggest visits being made to the ER in lieu of a clinic or dental office.
- Rates of adult tooth decay are higher in older adults yet patients aged 20 to 34 years comprise the largest segment of ER visits, suggesting that lack of dental insurance or an inability to meet high co-pays is driving such visits.

¹ Source: Emergency Room Database, Florida Agency on Health Care Administration

² Ambulatory care sensitive dental conditions, i.e. "preventable condition," are based on the ICD-9 (International Classification of Diseases, 9th Edition) codes from the published work of Dr. John Billings http://wagner.nyu.edu/files/admissions/acs_codes.pdf.