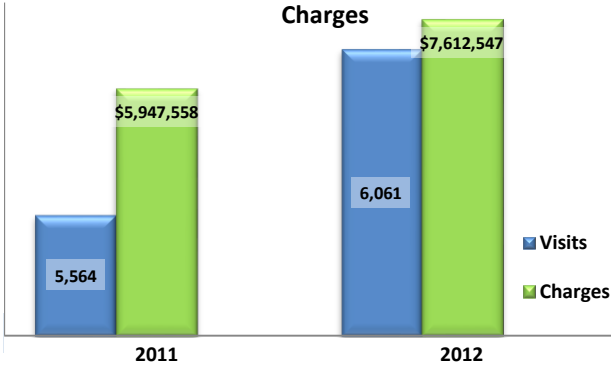


Emergency Department Dental Visits & Charges

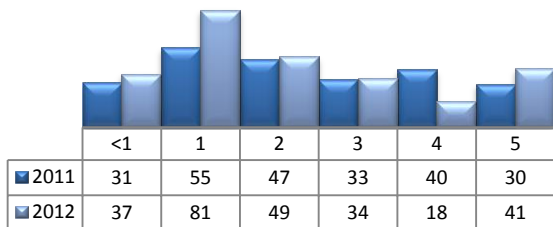


Ambulatory Care Sensitive oral health conditions (ACS) are those considered largely avoidable with adequate prevention and primary care. The use of hospital emergency departments – among the most expensive form of medical care – for the treatment of ACS conditions may indicate lack of access to primary dental care. Among the reasons Floridians do not receive regular preventive care include lack of dental coverage for adult Medicaid patients, lack of private-practice dentists willing to accept Medicaid's low payment rates, lack of county health department resources, lack of affordable dental insurance or inability to meet high co-pays, and lack of awareness of the importance of dental health to overall health.

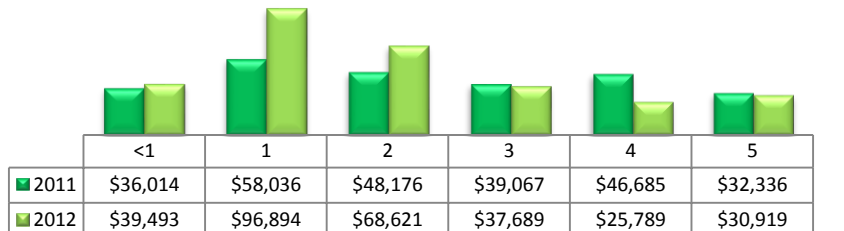
Floridians absorb the cost of Medicaid and uninsured ER dental visits in several ways including higher health insurance premiums and healthcare costs, increased tax dollars needed to fund the state Medicaid program, increased local tax dollars to support local public hospitals, and lost productivity.

Visits by Payor & Age						Charges by Payor & Age					
	0-19	19-34	35-49	50-64	65+		0-19	20-34	35-49	50-64	65+
2011	672	2,905	1,382	502	103	2011	713,253	2,873,738	1,586,912	581,915	191,740
Medicaid/Managed	469	997	355	100	3	Medicaid/Managed	483,952	1,035,245	413,487	133,130	22,439
Commercial	62	221	143	84	7	Commercial	87,744	221,171	188,005	107,969	8,772
Self-Pay/Uninsured	116	1,540	690	180	7	Self-Pay/Uninsured	109,028	1,457,515	749,554	167,288	18,164
Kidcare	10	0	0	0	0	Kidcare	17,720	-	-	-	-
Medicare/Managed	0	86	141	103	86	Medicare/Managed	-	80,862	142,228	129,711	142,365
All Other	15	61	53	35	0	All Other	14,809	78,945	93,638	43,817	-
2012	757	3,096	1,475	586	147	2012	861,364	3,901,323	1,862,955	766,778	220,127
Medicaid/Managed	513	1,120	360	114	2	Medicaid/Managed	591,109	1,428,609	485,522	135,023	1,983
Commercial	70	211	167	81	3	Commercial	94,652	300,881	237,566	124,230	3,825
Self-Pay/Uninsured	139	1,600	752	237	5	Self-Pay/Uninsured	130,695	1,970,957	892,921	301,668	4,564
Kidcare	22	0	0	0	0	Kidcare	22,553	-	-	-	-
Medicare/Managed	0	87	134	111	136	Medicare/Managed	-	81,346	175,955	141,914	208,401
All Other	13	78	62	43	1	All Other	22,355	119,530	70,991	63,943	1,354

Visits for Young Children for Preventable Conditions



Charges for Young Children for Preventable Conditions



Highest ED Dental ACS Visits by Zip Code

Zip Code	2011		2012	
	Visits	Charges	Visits	Charges
33705	387	424,776	397	467,022
33712	318	392,836	376	485,830
33713	270	291,570	276	402,430
33755	269	153,731	272	177,366
33756	261	210,184	296	262,483
33711	256	306,607	247	339,486
33714	242	338,930	288	499,443
33709	223	364,600	227	435,677
33781	214	286,807	291	471,644

Policy Indicators

Indicators to consider in shaping policies to increase the overall health of Floridians while decreasing costs to the state's healthcare system:

- High numbers of Medicaid patients visiting the ER for ACS dental problems suggest a lack of access to dentists or oral healthcare clinics accepting Medicaid for both preventative care and for treatment.
- ER visits during the regular work day and traditional business hours, combined with ACS diagnoses, suggest visits being made to the ER in lieu of a clinic or dental office.
- Rates of adult tooth decay are higher in older adults yet patients aged 20 to 34 years comprise the largest segment of ER visits, suggesting that lack of dental insurance or an inability to meet high co-pays is driving such visits.

¹ Source: Emergency Room Database, Florida Agency on Health Care Administration

² Ambulatory care sensitive dental conditions, i.e. "preventable condition," are based on the ICD-9 (International Classification of Diseases, 9th Edition) codes from the published work of Dr. John Billings http://wagner.nyu.edu/files/admissions/acs_codes.pdf.