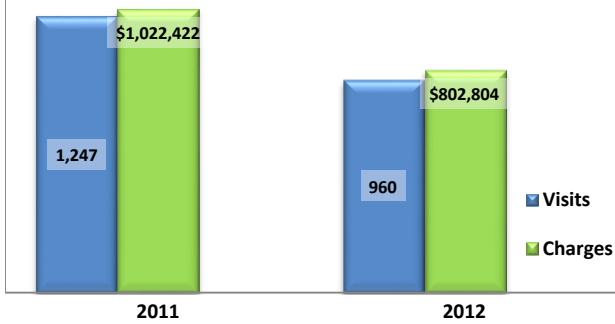


Emergency Department Dental Visits & Charges

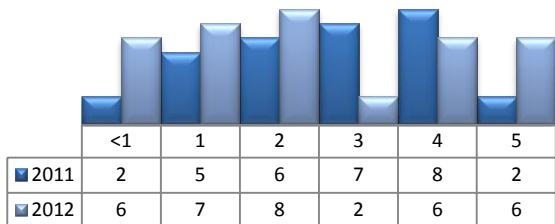


Ambulatory Care Sensitive oral health conditions (ACS) are those considered largely avoidable with adequate prevention and primary care. The use of hospital emergency departments – among the most expensive form of medical care – for the treatment of ACS conditions may indicate lack of access to primary dental care. Among the reasons Floridians do not receive regular preventive care include lack of dental coverage for adult Medicaid patients, lack of private-practice dentists willing to accept Medicaid’s low payment rates, lack of county health department resources, lack of affordable dental insurance or inability to meet high co-pays, and lack of awareness of the importance of dental health to overall health.

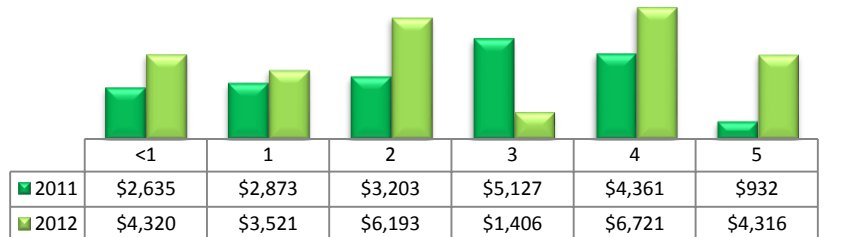
Floridians absorb the cost of Medicaid and uninsured ER dental visits in several ways including higher health insurance premiums and healthcare costs, increased tax dollars needed to fund the state Medicaid program, increased local tax dollars to support local public hospitals, and lost productivity.

Visits by Payor & Age						Charges by Payor & Age					
	0-19	19-34	35-49	50-64	65+		0-19	20-34	35-49	50-64	65+
2011	116	774	268	70	19	2011	83,930	619,143	244,223	59,242	15,884
Medicaid/Managed	88	441	121	19	0	Medicaid/Managed	63,886	329,853	113,067	13,223	-
Commercial	9	24	24	6	1	Commercial	5,175	22,880	18,502	7,110	650
Self-Pay/Uninsured	18	280	106	19	0	Self-Pay/Uninsured	14,219	244,661	99,000	15,358	-
Medicare/Managed	0	24	16	25	18	Medicare/Managed	-	18,851	11,711	22,982	15,234
All Other	1	5	1	1	0	All Other	650	2,898	1,943	569	-
2012	106	542	230	72	10	2012	88,118	413,315	217,877	71,955	11,539
Medicaid/Managed	82	323	122	21	2	Medicaid/Managed	64,076	204,798	93,044	12,333	1,148
Commercial	4	29	16	5	1	Commercial	6,043	38,707	11,919	6,327	703
Self-Pay/Uninsured	20	175	82	26	0	Self-Pay/Uninsured	17,999	156,726	105,611	35,298	-
Medicare/Managed	0	11	9	20	7	Medicare/Managed	-	7,394	6,816	17,997	9,688
All Other	0	4	1	0	0	All Other	-	5,690	487	-	-

Visits for Young Children for Preventable Conditions



Charges for Young Children for Preventable Conditions



Highest ED Dental ACS Visits by Zip Code

Zip Code	2011		2012	
	Visits	Charges	Visits	Charges
32177	542	415,392	433	379,424
32148	223	201,652	192	150,531
32189	105	78,909	81	63,811
32131	65	61,360	44	33,819
32666	56	54,085	44	41,401
32112	53	35,804	42	33,057
32187	41	30,418	28	21,550
32178	28	19,768	21	19,869
32181	27	37,378	19	14,154

Policy Indicators

Indicators to consider in shaping policies to increase the overall health of Floridians while decreasing costs to the state’s healthcare system:

- High numbers of Medicaid patients visiting the ER for ACS dental problems suggest a lack of access to dentists or oral healthcare clinics accepting Medicaid for both preventative care and for treatment.
- ER visits during the regular work day and traditional business hours, combined with ACS diagnoses, suggest visits being made to the ER in lieu of a clinic or dental office.
- Rates of adult tooth decay are higher in older adults yet patients aged 20 to 34 years comprise the largest segment of ER visits, suggesting that lack of dental insurance or an inability to meet high co-pays is driving such visits.

¹ Source: Emergency Room Database, Florida Agency on Health Care Administration

² Ambulatory care sensitive dental conditions, i.e. "preventable condition," are based on the ICD-9 (International Classification of Diseases, 9th Edition) codes from the published work of Dr. John Billings http://wagner.nyu.edu/files/admissions/acs_codes.pdf.