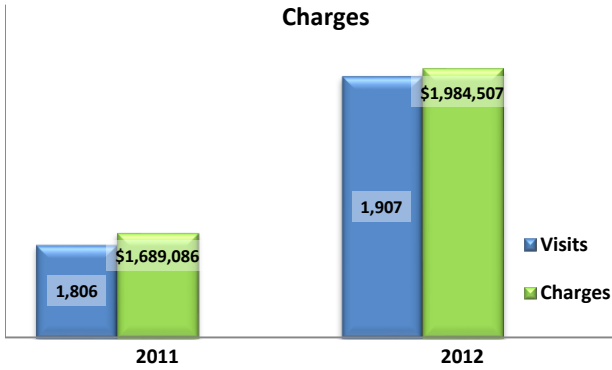


**Emergency Department Dental Visits & Charges**

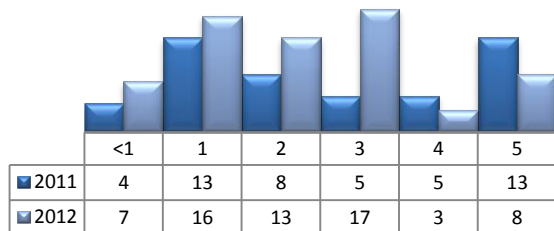


Ambulatory Care Sensitive oral health conditions (ACS) are those considered largely avoidable with adequate prevention and primary care. The use of hospital emergency departments – among the most expensive form of medical care – for the treatment of ACS conditions may indicate lack of access to primary dental care. Among the reasons Floridians do not receive regular preventive care include lack of dental coverage for adult Medicaid patients, lack of private-practice dentists willing to accept Medicaid's low payment rates, lack of county health department resources, lack of affordable dental insurance or inability to meet high co-pays, and lack of awareness of the importance of dental health to overall health.

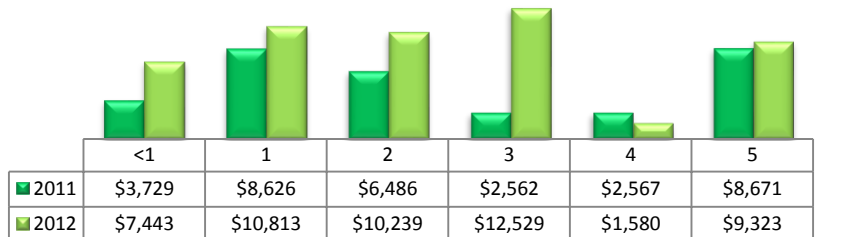
Floridians absorb the cost of Medicaid and uninsured ER dental visits in several ways including higher health insurance premiums and healthcare costs, increased tax dollars needed to fund the state Medicaid program, increased local tax dollars to support local public hospitals, and lost productivity.

Visits by Payor & Age						Charges by Payor & Age					
	0-19	19-34	35-49	50-64	65+		0-19	20-34	35-49	50-64	65+
<b>2011</b>	<b>157</b>	<b>912</b>	<b>478</b>	<b>188</b>	<b>71</b>	<b>2011</b>	<b>117,511</b>	<b>823,707</b>	<b>453,933</b>	<b>210,717</b>	<b>83,218</b>
Medicaid/Managed	107	353	152	33	1	Medicaid/Managed	77,962	356,051	149,476	31,814	446
Commercial	15	57	49	36	6	Commercial	18,368	42,681	48,714	51,297	6,175
Self-Pay/Uninsured	27	447	210	77	2	Self-Pay/Uninsured	15,882	361,657	183,606	78,630	999
Kidcare	5	1	0	0	0	Kidcare	2,964	573	-	-	-
Medicare/Managed	0	21	44	34	62	Medicare/Managed	-	16,935	50,549	36,582	75,598
All Other	3	33	23	8	0	All Other	2,335	45,810	21,588	12,394	-
<b>2012</b>	<b>197</b>	<b>913</b>	<b>448</b>	<b>248</b>	<b>101</b>	<b>2012</b>	<b>177,846</b>	<b>854,087</b>	<b>489,833</b>	<b>289,953</b>	<b>172,788</b>
Medicaid/Managed	135	349	134	63	1	Medicaid/Managed	119,055	334,359	139,427	57,509	1,023
Commercial	25	84	54	35	6	Commercial	25,870	76,336	45,511	58,422	5,617
Self-Pay/Uninsured	28	445	203	101	1	Self-Pay/Uninsured	24,705	410,903	205,232	104,700	2,348
Kidcare	7	0	0	0	0	Kidcare	6,720	-	-	-	-
Medicare/Managed	0	19	51	34	92	Medicare/Managed	-	17,503	93,353	38,612	163,265
All Other	2	16	6	15	1	All Other	1,496	14,986	6,310	30,710	535

**Visits for Young Children for Preventable Conditions**



**Charges for Young Children for Preventable Conditions**



**Highest ED Dental ACS Visits by Zip Code**

Zip Code	2011		2012	
	Visits	Charges	Visits	Charges
34234	206	159,871	235	208,458
34287	194	159,503	218	214,131
34286	175	136,663	144	109,754
34232	167	139,379	158	139,369
34231	136	113,446	153	127,913
34293	134	161,795	138	161,320
34275	99	111,564	71	95,908
34237	93	86,740	117	98,683
34239	77	64,533	81	58,494

**Policy Indicators**

Indicators to consider in shaping policies to increase the overall health of Floridians while decreasing costs to the state's healthcare system:

- High numbers of Medicaid patients visiting the ER for ACS dental problems suggest a lack of access to dentists or oral healthcare clinics accepting Medicaid for both preventative care and for treatment.
- ER visits during the regular work day and traditional business hours, combined with ACS diagnoses, suggest visits being made to the ER in lieu of a clinic or dental office.
- Rates of adult tooth decay are higher in older adults yet patients aged 20 to 34 years comprise the largest segment of ER visits, suggesting that lack of dental insurance or an inability to meet high co-pays is driving such visits.

<sup>1</sup> Source: Emergency Room Database, Florida Agency on Health Care Administration

<sup>2</sup> Ambulatory care sensitive dental conditions, i.e. "preventable condition," are based on the ICD-9 (International Classification of Diseases, 9th Edition) codes from the published work of Dr. John Billings [http://wagner.nyu.edu/files/admissions/acs\\_codes.pdf](http://wagner.nyu.edu/files/admissions/acs_codes.pdf).