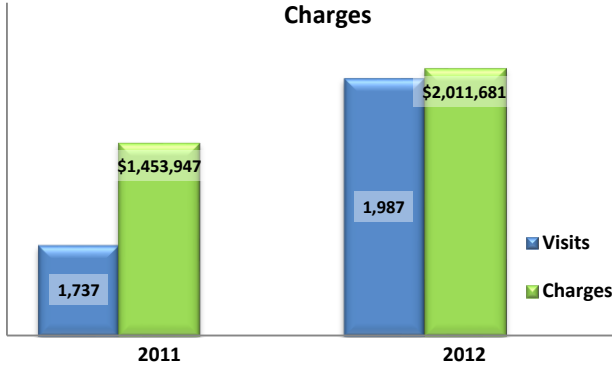


Emergency Department Dental Visits & Charges

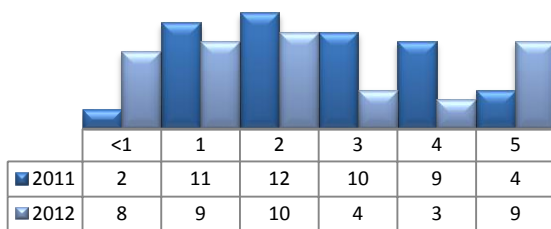


Ambulatory Care Sensitive oral health conditions (ACS) are those considered largely avoidable with adequate prevention and primary care. The use of hospital emergency departments – among the most expensive form of medical care – for the treatment of ACS conditions may indicate lack of access to primary dental care. Among the reasons Floridians do not receive regular preventive care include lack of dental coverage for adult Medicaid patients, lack of private-practice dentists willing to accept Medicaid's low payment rates, lack of county health department resources, lack of affordable dental insurance or inability to meet high co-pays, and lack of awareness of the importance of dental health to overall health.

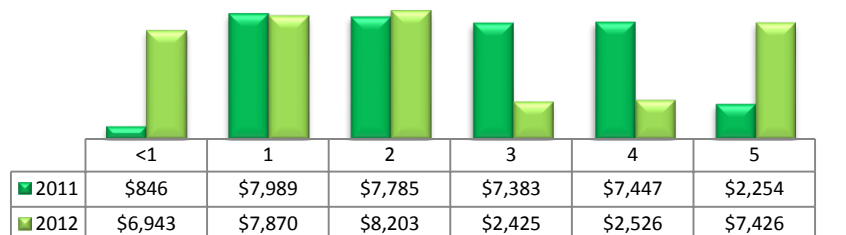
Floridians absorb the cost of Medicaid and uninsured ER dental visits in several ways including higher health insurance premiums and healthcare costs, increased tax dollars needed to fund the state Medicaid program, increased local tax dollars to support local public hospitals, and lost productivity.

Visits by Payor & Age						Charges by Payor & Age					
	0-19	19-34	35-49	50-64	65+		0-19	20-34	35-49	50-64	65+
2011	190	938	423	161	25	2011	132,806	715,616	425,901	148,684	30,940
Medicaid/Managed	108	234	90	16	0	Medicaid/Managed	85,775	201,275	121,860	15,008	-
Commercial	22	63	64	26	3	Commercial	18,364	77,676	55,774	30,381	2,897
Self-Pay/Uninsured	49	576	232	90	1	Self-Pay/Uninsured	23,151	399,690	197,550	70,929	506
Kidcare	6	6	4	1	0	Kidcare	2,260	4,314	2,914	286	-
Medicare/Managed	0	24	21	22	21	Medicare/Managed	-	12,095	32,952	15,034	27,537
All Other	5	35	12	6	0	All Other	3,256	20,566	14,851	17,046	-
2012	215	1,053	499	170	50	2012	212,178	946,905	544,494	216,389	91,715
Medicaid/Managed	117	344	128	21	0	Medicaid/Managed	108,211	313,369	125,882	23,840	-
Commercial	30	86	73	29	3	Commercial	43,780	83,210	86,385	57,502	5,208
Self-Pay/Uninsured	54	556	243	80	3	Self-Pay/Uninsured	50,597	481,480	270,602	75,601	11,198
Kidcare	8	2	0	0	0	Kidcare	7,600	1,617	-	-	-
Medicare/Managed	0	32	42	28	44	Medicare/Managed	-	28,916	47,440	42,307	75,309
All Other	6	33	13	12	0	All Other	1,990	38,313	14,185	17,139	-

Visits for Young Children for Preventable Conditions



Charges for Young Children for Preventable Conditions



Highest ED Dental ACS Visits by Zip Code

Zip Code	2011		2012	
	Visits	Charges	Visits	Charges
32771	425	465,492	493	680,250
32714	206	129,164	250	170,137
32773	193	187,520	202	253,140
32707	190	130,070	183	160,976
32701	145	105,204	160	112,332
32708	131	87,563	176	150,470
32750	111	66,965	159	109,064
32746	86	77,419	89	96,410
32765	86	70,946	111	108,388

Policy Indicators

Indicators to consider in shaping policies to increase the overall health of Floridians while decreasing costs to the state's healthcare system:

- High numbers of Medicaid patients visiting the ER for ACS dental problems suggest a lack of access to dentists or oral healthcare clinics accepting Medicaid for both preventative care and for treatment.
- ER visits during the regular work day and traditional business hours, combined with ACS diagnoses, suggest visits being made to the ER in lieu of a clinic or dental office.
- Rates of adult tooth decay are higher in older adults yet patients aged 20 to 34 years comprise the largest segment of ER visits, suggesting that lack of dental insurance or an inability to meet high co-pays is driving such visits.

¹ Source: Emergency Room Database, Florida Agency on Health Care Administration

² Ambulatory care sensitive dental conditions, i.e. "preventable condition," are based on the ICD-9 (International Classification of Diseases, 9th Edition) codes from the published work of Dr. John Billings http://wagner.nyu.edu/files/admissions/acs_codes.pdf.