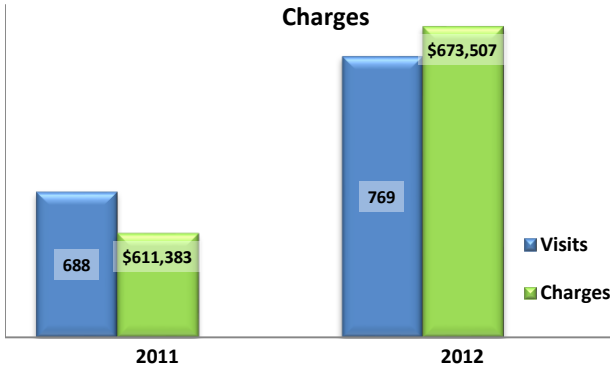


Emergency Department Dental Visits & Charges

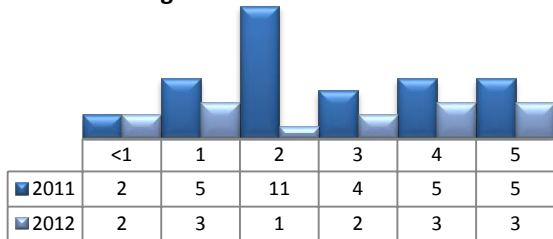


Ambulatory Care Sensitive oral health conditions (ACS) are those considered largely avoidable with adequate prevention and primary care. The use of hospital emergency departments – among the most expensive form of medical care – for the treatment of ACS conditions may indicate lack of access to primary dental care. Among the reasons Floridians do not receive regular preventive care include lack of dental coverage for adult Medicaid patients, lack of private-practice dentists willing to accept Medicaid's low payment rates, lack of county health department resources, lack of affordable dental insurance or inability to meet high co-pays, and lack of awareness of the importance of dental health to overall health.

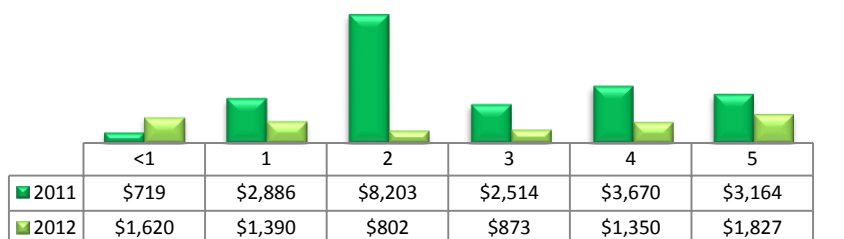
Floridians absorb the cost of Medicaid and uninsured ER dental visits in several ways including higher health insurance premiums and healthcare costs, increased tax dollars needed to fund the state Medicaid program, increased local tax dollars to support local public hospitals, and lost productivity.

Visits by Payor & Age						Charges by Payor & Age					
	0-19	19-34	35-49	50-64	65+		0-19	20-34	35-49	50-64	65+
2011	76	388	154	54	16	2011	63,414	285,989	166,052	78,862	17,066
Medicaid/Managed	57	183	57	14	0	Medicaid/Managed	40,820	135,300	64,262	9,254	-
Commercial	5	27	20	14	0	Commercial	4,602	20,785	15,828	17,541	-
Self-Pay/Uninsured	13	164	65	17	1	Self-Pay/Uninsured	16,985	117,390	77,684	27,755	696
Kidcare	1	0	0	0	0	Kidcare	1,007	-	-	-	-
Medicare/Managed	0	12	11	8	15	Medicare/Managed	-	10,086	6,629	21,636	16,370
All Other	0	2	1	1	0	All Other	-	2,428	1,649	2,676	-
2012	79	442	180	55	13	2012	64,095	371,618	161,694	58,957	17,143
Medicaid/Managed	59	238	71	9	0	Medicaid/Managed	52,141	184,485	58,379	8,541	-
Commercial	12	25	20	12	0	Commercial	7,819	16,473	14,100	9,799	-
Self-Pay/Uninsured	7	169	75	17	0	Self-Pay/Uninsured	3,303	157,355	64,135	17,453	-
Medicare/Managed	0	6	14	15	13	Medicare/Managed	-	4,289	25,080	20,620	17,143
All Other	1	4	0	2	0	All Other	832	9,016	-	2,544	-

Visits for Young Children for Preventable Conditions



Charges for Young Children for Preventable Conditions



Highest ED Dental ACS Visits by Zip Code

Zip Code	2011		2012	
	Visits	Charges	Visits	Charges
32060	346	283,883	348	294,637
32064	203	164,532	226	176,348
32008	42	67,716	41	60,218
32071	39	35,781	57	49,220
32094	35	34,369	53	62,994
32062	23	25,102	44	30,090

Policy Indicators

Indicators to consider in shaping policies to increase the overall health of Floridians while decreasing costs to the state's healthcare system:

- High numbers of Medicaid patients visiting the ER for ACS dental problems suggest a lack of access to dentists or oral healthcare clinics accepting Medicaid for both preventative care and for treatment.
- ER visits during the regular work day and traditional business hours, combined with ACS diagnoses, suggest visits being made to the ER in lieu of a clinic or dental office.
- Rates of adult tooth decay are higher in older adults yet patients aged 20 to 34 years comprise the largest segment of ER visits, suggesting that lack of dental insurance or an inability to meet high co-pays is driving such visits.

¹ Source: Emergency Room Database, Florida Agency on Health Care Administration

² Ambulatory care sensitive dental conditions, i.e. "preventable condition," are based on the ICD-9 (International Classification of Diseases, 9th Edition) codes from the published work of Dr. John Billings http://wagner.nyu.edu/files/admissions/acs_codes.pdf.