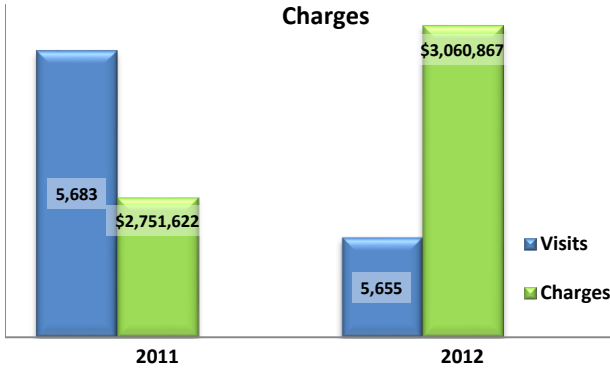


**Emergency Department Dental Visits & Charges**



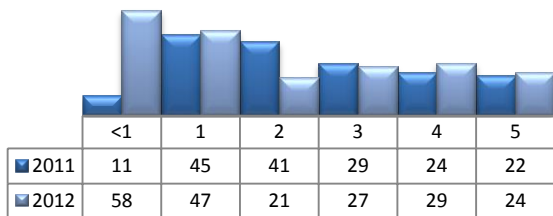
Ambulatory Care Sensitive oral health conditions (ACS) are those considered largely avoidable with adequate prevention and primary care. The use of hospital emergency departments – among the most expensive form of medical care – for the treatment of ACS conditions may indicate lack of access to primary dental care. Among the reasons Floridians do not receive regular preventive care include lack of dental coverage for adult Medicaid patients, lack of private-practice dentists willing to accept Medicaid's low payment rates, lack of county health department resources, lack of affordable dental insurance or inability to meet high co-pays, and lack of awareness of the importance of dental health to overall health.

Floridians absorb the cost of Medicaid and uninsured ER dental visits in several ways including higher health insurance premiums and healthcare costs, increased tax dollars needed to fund the state Medicaid program, increased local tax dollars to support local public hospitals, and lost productivity.

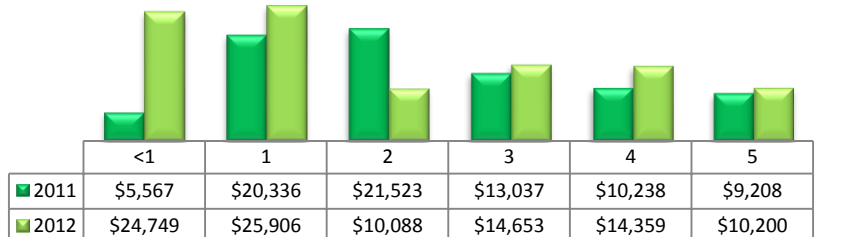
Visits by Payor & Age					
	0-19	19-34	35-49	50-64	65+
<b>2011</b>	<b>555</b>	<b>2,930</b>	<b>1,485</b>	<b>561</b>	<b>152</b>
Medicaid/Managed	381	1,178	457	109	2
Commercial	45	192	150	88	2
Self-Pay/Uninsured	104	1,412	722	210	11
Kidcare	14	3	0	0	0
Medicare/Managed	0	60	84	85	135
All Other	11	85	72	69	2
<b>2012</b>	<b>611</b>	<b>2,845</b>	<b>1,453</b>	<b>568</b>	<b>178</b>
Medicaid/Managed	441	1,084	459	124	1
Commercial	40	192	144	85	5
Self-Pay/Uninsured	102	1,433	679	226	18
Kidcare	20	0	0	0	0
Medicare/Managed	0	58	112	87	151
All Other	8	78	59	46	3

Charges by Payor & Age					
	0-19	20-34	35-49	50-64	65+
<b>2011</b>	<b>257,713</b>	<b>1,369,798</b>	<b>738,456</b>	<b>285,143</b>	<b>100,512</b>
Medicaid/Managed	165,801	538,306	216,350	52,513	767
Commercial	25,435	105,326	87,657	54,978	1,723
Self-Pay/Uninsured	54,689	655,523	350,323	92,414	6,683
Kidcare	5,322	1,384	-	-	-
Medicare/Managed	-	27,162	51,072	48,152	89,615
All Other	6,466	42,097	33,054	37,086	1,724
<b>2012</b>	<b>316,937</b>	<b>1,477,710</b>	<b>764,514</b>	<b>340,760</b>	<b>160,946</b>
Medicaid/Managed	229,094	543,742	225,323	75,259	525
Commercial	20,596	129,479	94,698	58,718	2,960
Self-Pay/Uninsured	51,613	736,933	350,002	119,271	12,588
Kidcare	11,583	-	-	-	-
Medicare/Managed	-	29,182	66,717	59,991	141,689
All Other	4,051	38,374	27,774	27,521	3,184

**Visits for Young Children for Preventable Conditions**



**Charges for Young Children for Preventable Conditions**



**Highest ED Dental ACS Visits by Zip Code**

Zip Code	2011		2012	
	Visits	Charges	Visits	Charges
32114	730	284,932	792	315,218
32117	461	188,018	470	220,580
32720	416	209,223	415	269,465
32168	403	214,379	325	217,524
32738	395	235,570	404	269,304
32174	390	166,419	362	165,858
32725	385	228,697	404	255,087
32724	298	158,807	342	190,707
32127	286	106,780	260	129,304

**Policy Indicators**

Indicators to consider in shaping policies to increase the overall health of Floridians while decreasing costs to the state's healthcare system:

- High numbers of Medicaid patients visiting the ER for ACS dental problems suggest a lack of access to dentists or oral healthcare clinics accepting Medicaid for both preventative care and for treatment.
- ER visits during the regular work day and traditional business hours, combined with ACS diagnoses, suggest visits being made to the ER in lieu of a clinic or dental office.
- Rates of adult tooth decay are higher in older adults yet patients aged 20 to 34 years comprise the largest segment of ER visits, suggesting that lack of dental insurance or an inability to meet high co-pays is driving such visits.

<sup>1</sup> Source: Emergency Room Database, Florida Agency on Health Care Administration

<sup>2</sup> Ambulatory care sensitive dental conditions, i.e. "preventable condition," are based on the ICD-9 (International Classification of Diseases, 9th Edition) codes from the published work of Dr. John Billings [http://wagner.nyu.edu/files/admissions/acs\\_codes.pdf](http://wagner.nyu.edu/files/admissions/acs_codes.pdf).