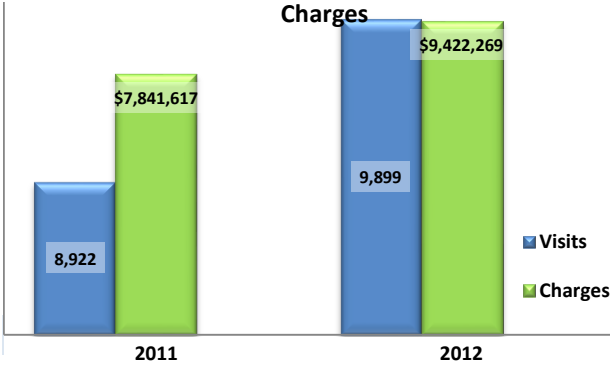


**Emergency Department Dental Visits & Charges**

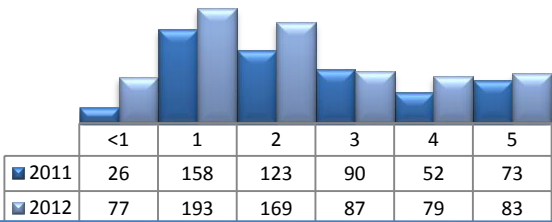


Ambulatory Care Sensitive oral health conditions (ACS) are those considered largely avoidable with adequate prevention and primary care. The use of hospital emergency departments – among the most expensive form of medical care – for the treatment of ACS conditions may indicate lack of access to primary dental care. Among the reasons Floridians do not receive regular preventive care include lack of dental coverage for adult Medicaid patients, lack of private-practice dentists willing to accept Medicaid's low payment rates, lack of county health department resources, lack of affordable dental insurance or inability to meet high co-pays, and lack of awareness of the importance of dental health to overall health.

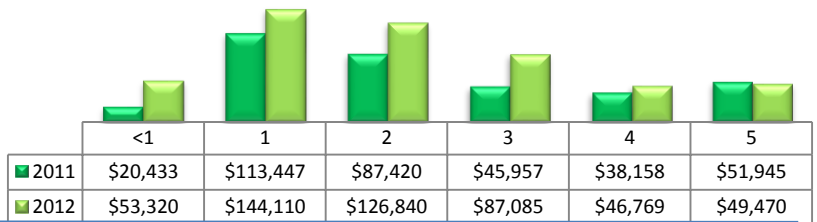
Floridians absorb the cost of Medicaid and uninsured ER dental visits in several ways including higher health insurance premiums and healthcare costs, increased tax dollars needed to fund the state Medicaid program, increased local tax dollars to support local public hospitals, and lost productivity.

Visits by Payor & Age						Charges by Payor & Age					
	0-19	19-34	35-49	50-64	65+		0-19	20-34	35-49	50-64	65+
<b>2011</b>	<b>1,311</b>	<b>3,914</b>	<b>2,274</b>	<b>1,167</b>	<b>256</b>	<b>2011</b>	<b>1,041,433</b>	<b>3,385,353</b>	<b>1,932,244</b>	<b>1,109,719</b>	<b>372,868</b>
Medicaid/Managed	821	1,133	435	168	8	Medicaid/Managed	683,210	1,052,199	393,530	150,532	24,008
Commercial	136	308	255	169	6	Commercial	89,954	324,612	288,282	240,293	26,408
Self-Pay/Uninsured	273	2,127	1,163	478	17	Self-Pay/Uninsured	224,609	1,764,687	920,227	365,982	16,429
Kidcare	19	0	0	0	0	Kidcare	13,170	-	-	-	-
Medicare/Managed	31	167	225	191	216	Medicare/Managed	15,141	106,061	198,737	225,193	287,424
All Other	31	179	196	161	9	All Other	15,349	137,794	131,468	127,719	18,599
<b>2012</b>	<b>1,594</b>	<b>4,371</b>	<b>2,282</b>	<b>1,314</b>	<b>338</b>	<b>2012</b>	<b>1,305,233</b>	<b>4,060,591</b>	<b>2,197,842</b>	<b>1,318,216</b>	<b>540,387</b>
Medicaid/Managed	978	1,299	413	200	9	Medicaid/Managed	809,708	1,257,779	439,140	229,308	12,100
Commercial	176	427	273	172	10	Commercial	156,144	444,054	381,531	220,846	10,744
Self-Pay/Uninsured	348	2,352	1,231	549	33	Self-Pay/Uninsured	255,924	2,131,951	1,039,494	463,558	48,675
Kidcare	30	0	0	0	0	Kidcare	27,230	-	-	-	-
Medicare/Managed	29	142	218	233	281	Medicare/Managed	17,080	134,512	200,221	245,780	466,363
All Other	33	151	147	160	5	All Other	39,147	92,295	137,456	158,724	2,505

**Visits for Young Children for Preventable Conditions**



**Charges for Young Children for Preventable Conditions**



**Highest ED Dental ACS Visits by Zip Code**

Zip Code	2011		2012	
	Visits	Charges	Visits	Charges
33311	983	1,013,566	1,118	1,237,224
33020	569	307,675	594	326,128
33313	469	580,186	605	882,280
33060	426	302,420	396	332,694
33023	419	269,088	484	273,510
33312	392	344,099	433	458,344
33024	355	186,420	404	218,552
33064	327	289,450	378	304,221
33068	287	344,726	313	434,655
33309	270	287,279	296	311,337

**Policy Indicators**

Indicators to consider in shaping policies to increase the overall health of Floridians while decreasing costs to the state's healthcare system:

- High numbers of Medicaid patients visiting the ER for ACS dental problems suggest a lack of access to dentists or oral healthcare clinics accepting Medicaid for both preventative care and for treatment.
- ER visits during the regular work day and traditional business hours, combined with ACS diagnoses, suggest visits being made to the ER in lieu of a clinic or dental office.
- Rates of adult tooth decay are higher in older adults yet patients aged 20 to 34 years comprise the largest segment of ER visits, suggesting that lack of dental insurance or an inability to meet high co-pays is driving such visits.

<sup>1</sup> Source: Emergency Room Database, Florida Agency on Health Care Administration

<sup>2</sup> Ambulatory care sensitive dental conditions, i.e. "preventable condition," are based on the ICD-9 (International Classification of Diseases, 9th Edition) codes from the published work of Dr. John Billings ([http://wagner.nyu.edu/files/admissions/acs\\_codes.pdf](http://wagner.nyu.edu/files/admissions/acs_codes.pdf)).