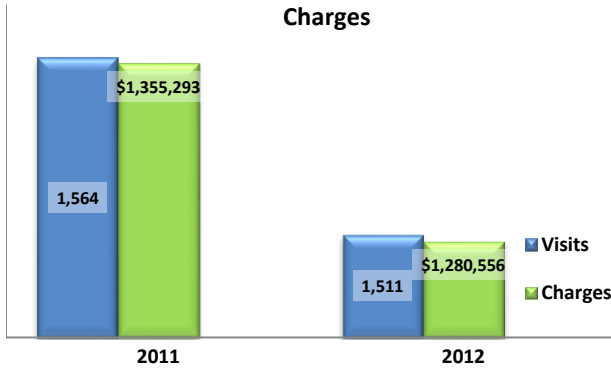


Emergency Department Dental Visits & Charges

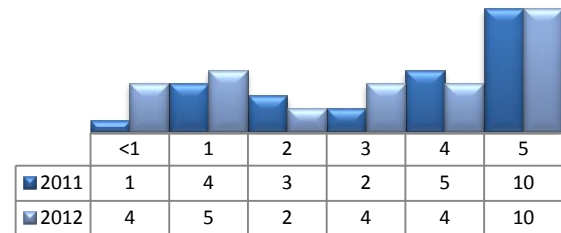


Ambulatory Care Sensitive oral health conditions (ACS) are those considered largely avoidable with adequate prevention and primary care. The use of hospital emergency departments – among the most expensive form of medical care – for the treatment of ACS conditions may indicate lack of access to primary dental care. Among the reasons Floridians do not receive regular preventive care include lack of dental coverage for adult Medicaid patients, lack of private-practice dentists willing to accept Medicaid’s low payment rates, lack of county health department resources, lack of affordable dental insurance or inability to meet high co-pays, and lack of awareness of the importance of dental health to overall health.

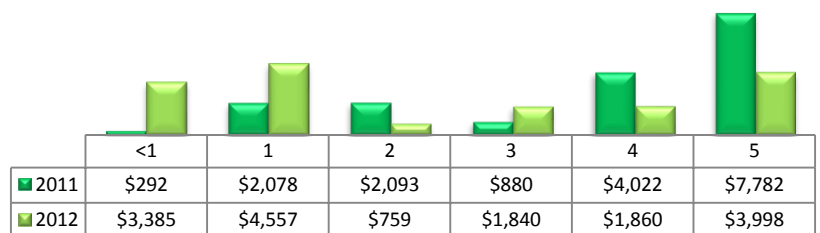
Floridians absorb the cost of Medicaid and uninsured ER dental visits in several ways including higher health insurance premiums and healthcare costs, increased tax dollars needed to fund the state Medicaid program, increased local tax dollars to support local public hospitals, and lost productivity.

Visits by Payor & Age						Charges by Payor & Age					
	0-19	19-34	35-49	50-64	65+		0-19	20-34	35-49	50-64	65+
2011	142	883	403	105	31	2011	112,009	721,918	379,335	101,543	40,488
Medicaid/Managed	107	441	145	20	0	Medicaid/Managed	79,093	374,842	132,708	17,678	-
Commercial	10	69	64	22	4	Commercial	10,252	58,107	49,065	27,637	2,554
Self-Pay/Uninsured	22	330	165	36	0	Self-Pay/Uninsured	21,255	254,539	169,908	20,890	-
Kidcare	1	5	0	0	0	Kidcare	529	2,741	-	-	-
Medicare/Managed	0	20	23	23	27	Medicare/Managed	-	13,431	20,110	33,132	37,934
All Other	2	18	6	4	0	All Other	880	18,258	7,544	2,206	-
2012	136	805	389	141	40	2012	91,855	637,380	351,591	136,991	62,739
Medicaid/Managed	103	407	169	26	0	Medicaid/Managed	72,048	325,428	162,739	18,203	-
Commercial	9	54	37	21	1	Commercial	8,311	46,598	38,151	21,525	4,242
Self-Pay/Uninsured	22	325	138	61	0	Self-Pay/Uninsured	10,192	245,892	90,799	57,192	-
Medicare/Managed	0	15	37	28	39	Medicare/Managed	-	15,955	44,915	35,850	58,497
All Other	2	4	8	5	0	All Other	1,304	3,507	14,987	4,221	-

Visits for Young Children for Preventable Conditions



Charges for Young Children for Preventable Conditions



Highest ED Dental ACS Visits by Zip Code

Zip Code	2011		2012	
	Visits	Charges	Visits	Charges
34452	162	104,624	143	74,939
34442	154	95,741	142	90,631
34446	145	164,633	128	133,182
34453	139	74,714	147	92,274
34465	137	186,260	184	114,222
34429	125	118,597	102	122,554
34448	122	127,668	112	133,483
34450	113	57,504	101	60,789
34436	104	70,809	94	62,179
34428	104	119,356	119	148,425

Policy Indicators

Indicators to consider in shaping policies to increase the overall health of Floridians while decreasing costs to the state’s healthcare system:

- High numbers of Medicaid patients visiting the ER for ACS dental problems suggest a lack of access to dentists or oral healthcare clinics accepting Medicaid for both preventative care and for treatment.
- ER visits during the regular work day and traditional business hours, combined with ACS diagnoses, suggest visits being made to the ER in lieu of a clinic or dental office.
- Rates of adult tooth decay are higher in older adults yet patients aged 20 to 34 years comprise the largest segment of ER visits, suggesting that lack of dental insurance or an inability to meet high co-pays is driving such visits.

¹ Source: Emergency Room Database, Florida Agency on Health Care Administration

² Ambulatory care sensitive dental conditions, i.e. "preventable condition," are based on the ICD-9 (International Classification of Diseases, 9th Edition) codes from the published work of Dr. John Billings (http://wagner.nyu.edu/files/admissions/acs_codes.pdf).