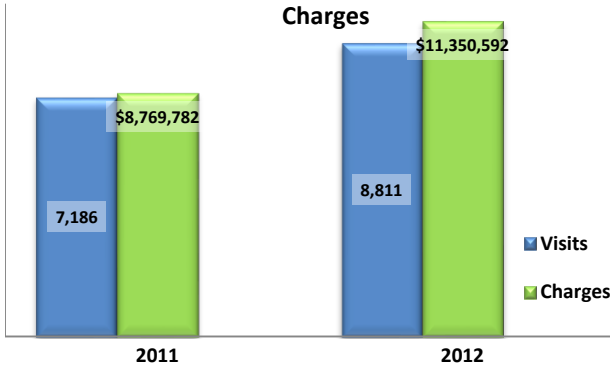


Emergency Department Dental Visits & Charges

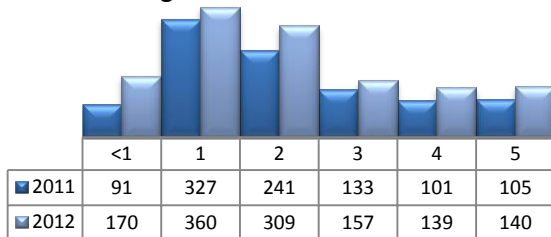


Ambulatory Care Sensitive oral health conditions (ACS) are those considered largely avoidable with adequate prevention and primary care. The use of hospital emergency departments – among the most expensive form of medical care – for the treatment of ACS conditions may indicate lack of access to primary dental care. Among the reasons Floridians do not receive regular preventive care include lack of dental coverage for adult Medicaid patients, lack of private-practice dentists willing to accept Medicaid's low payment rates, lack of county health department resources, lack of affordable dental insurance or inability to meet high co-pays, and lack of awareness of the importance of dental health to overall health.

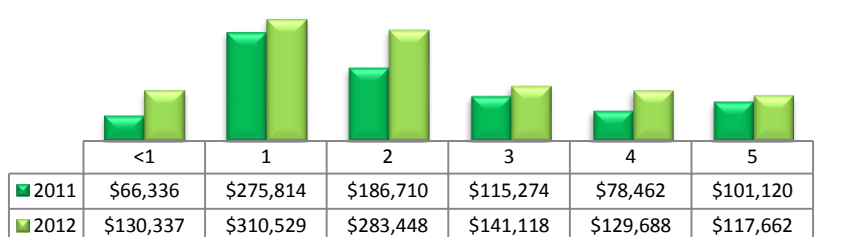
Floridians absorb the cost of Medicaid and uninsured ER dental visits in several ways including higher health insurance premiums and healthcare costs, increased tax dollars needed to fund the state Medicaid program, increased local tax dollars to support local public hospitals, and lost productivity.

Visits by Payor & Age						Charges by Payor & Age					
	0-19	19-34	35-49	50-64	65+		0-19	20-34	35-49	50-64	65+
2011	2,016	2,822	1,351	723	274	2011	1,815,124	3,267,541	1,988,873	1,095,572	602,672
Medicaid/Managed	1,500	875	336	139	19	Medicaid/Managed	1,338,714	1,075,675	484,266	208,528	32,475
Commercial	208	355	211	159	15	Commercial	216,544	525,059	439,396	309,654	37,464
Self-Pay/Uninsured	225	1,350	560	230	9	Self-Pay/Uninsured	174,360	1,398,898	723,982	321,037	23,817
Kidcare	28	8	3	1	0	Kidcare	40,548	7,533	2,102	458	-
Medicare/Managed	21	106	145	118	226	Medicare/Managed	10,453	127,762	173,908	139,140	499,897
All Other	34	128	96	76	5	All Other	34,505	132,614	165,219	116,755	9,019
2012	2,559	3,309	1,655	894	394	2012	2,409,841	3,756,017	2,515,051	1,584,008	1,085,675
Medicaid/Managed	1,922	1,107	420	223	27	Medicaid/Managed	1,762,147	1,224,435	647,694	442,853	103,934
Commercial	241	396	277	148	13	Commercial	247,186	569,318	605,798	348,730	38,214
Self-Pay/Uninsured	272	1,537	705	268	18	Self-Pay/Uninsured	270,019	1,632,852	956,306	420,799	41,907
Kidcare	55	7	2	0	0	Kidcare	65,822	11,365	2,611	-	-
Medicare/Managed	20	137	138	138	326	Medicare/Managed	14,709	142,879	175,932	208,367	892,628
All Other	49	125	113	117	10	All Other	49,958	175,168	126,710	163,259	8,992

Visits for Young Children for Preventable Conditions



Charges for Young Children for Preventable Conditions



Highest ED Dental ACS Visits by Zip Code

Zip Code	2011		2012	
	Visits	Charges	Visits	Charges
33147	384	462,449	448	578,843
33142	319	332,431	424	510,292
33033	314	335,510	388	344,142
33030	218	246,442	270	275,985
33127	211	230,836	264	279,548
33157	208	268,220	231	289,512
33150	199	243,059	217	313,253
33161	194	243,698	287	305,652
33054	189	180,194	222	169,025

Policy Indicators

Indicators to consider in shaping policies to increase the overall health of Floridians while decreasing costs to the state's healthcare system:

- High numbers of Medicaid patients visiting the ER for ACS dental problems suggest a lack of access to dentists or oral healthcare clinics accepting Medicaid for both preventative care and for treatment.
- ER visits during the regular work day and traditional business hours, combined with ACS diagnoses, suggest visits being made to the ER in lieu of a clinic or dental office.
- Rates of adult tooth decay are higher in older adults yet patients aged 20 to 34 years comprise the largest segment of ER visits, suggesting that lack of dental insurance or an inability to meet high co-pays is driving such visits.

¹ Source: Emergency Room Database, Florida Agency on Health Care Administration

² Ambulatory care sensitive dental conditions, i.e. "preventable condition," are based on the ICD-9 (International Classification of Diseases, 9th Edition) codes from the published work of Dr. John Billings http://wagner.nyu.edu/files/admissions/acs_codes.pdf.