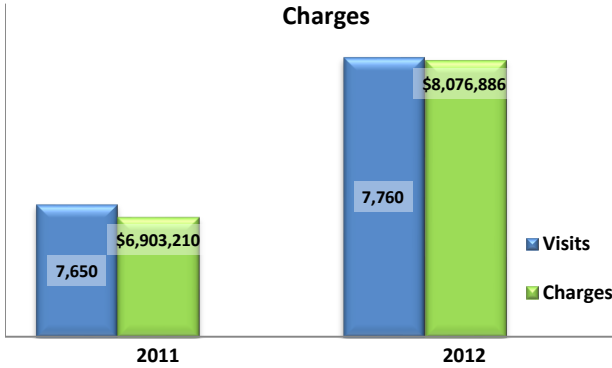


**Emergency Department Dental Visits & Charges**

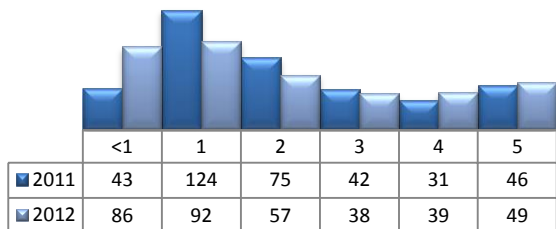


Ambulatory Care Sensitive oral health conditions (ACS) are those considered largely avoidable with adequate prevention and primary care. The use of hospital emergency departments – among the most expensive form of medical care – for the treatment of ACS conditions may indicate lack of access to primary dental care. Among the reasons Floridians do not receive regular preventive care include lack of dental coverage for adult Medicaid patients, lack of private-practice dentists willing to accept Medicaid’s low payment rates, lack of county health department resources, lack of affordable dental insurance or inability to meet high co-pays, and lack of awareness of the importance of dental health to overall health.

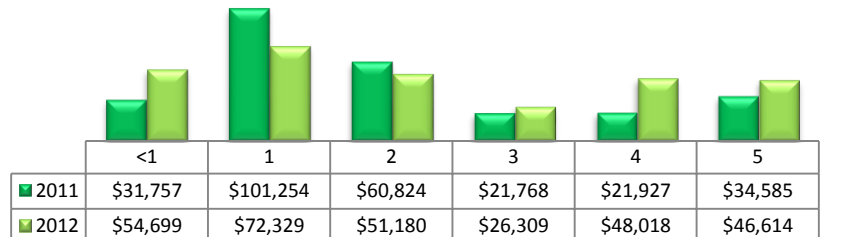
Floridians absorb the cost of Medicaid and uninsured ER dental visits in several ways including higher health insurance premiums and healthcare costs, increased tax dollars needed to fund the state Medicaid program, increased local tax dollars to support local public hospitals, and lost productivity.

Visits by Payor & Age						Charges by Payor & Age					
	0-19	19-34	35-49	50-64	65+		0-19	20-34	35-49	50-64	65+
<b>2011</b>	<b>976</b>	<b>4,280</b>	<b>1,790</b>	<b>502</b>	<b>102</b>	<b>2011</b>	<b>814,316</b>	<b>3,544,217</b>	<b>1,808,091</b>	<b>578,627</b>	<b>157,959</b>
Medicaid/Managed	743	1,999	612	82	0	Medicaid/Managed	596,969	1,618,287	617,375	89,669	-
Commercial	79	275	216	73	3	Commercial	66,830	215,588	241,412	101,777	2,286
Self-Pay/Uninsured	129	1,672	699	162	2	Self-Pay/Uninsured	117,623	1,368,613	677,268	143,023	1,366
Kidcare	7	2	1	0	0	Kidcare	4,880	1,061	286	-	-
Medicare/Managed	0	106	161	138	96	Medicare/Managed	-	100,206	150,639	172,113	153,612
All Other	18	226	101	47	1	All Other	28,014	240,462	121,111	72,045	695
<b>2012</b>	<b>1,023</b>	<b>4,286</b>	<b>1,775</b>	<b>544</b>	<b>132</b>	<b>2012</b>	<b>948,297</b>	<b>4,051,087</b>	<b>2,017,747</b>	<b>735,134</b>	<b>324,621</b>
Medicaid/Managed	739	1,947	641	88	0	Medicaid/Managed	678,599	1,828,268	680,833	146,183	-
Commercial	93	349	210	87	8	Commercial	113,272	379,210	257,243	144,325	10,601
Self-Pay/Uninsured	137	1,550	613	177	2	Self-Pay/Uninsured	113,762	1,402,647	709,047	212,598	1,077
Kidcare	5	0	0	0	0	Kidcare	6,281	-	-	-	-
Medicare/Managed	19	172	187	136	118	Medicare/Managed	12,983	171,639	202,759	158,512	298,941
All Other	30	268	124	56	4	All Other	23,400	269,323	167,865	73,516	14,002

**Visits for Young Children for Preventable Conditions**



**Charges for Young Children for Preventable Conditions**



**Highest ED Dental ACS Visits by Zip Code**

Zip Code	2011		2012	
	Visits	Charges	Visits	Charges
33801	911	720,514	887	926,184
33805	663	501,652	692	728,650
33810	502	432,518	522	537,470
33880	477	491,903	496	511,504
33823	437	399,075	424	454,923
33815	395	357,502	389	429,453
33844	383	327,915	374	387,837
33881	356	412,449	320	366,842
33830	338	258,133	303	279,347

**Policy Indicators**

Indicators to consider in shaping policies to increase the overall health of Floridians while decreasing costs to the state’s healthcare system:

- High numbers of Medicaid patients visiting the ER for ACS dental problems suggest a lack of access to dentists or oral healthcare clinics accepting Medicaid for both preventative care and for treatment.
- ER visits during the regular work day and traditional business hours, combined with ACS diagnoses, suggest visits being made to the ER in lieu of a clinic or dental office.
- Rates of adult tooth decay are higher in older adults yet patients aged 20 to 34 years comprise the largest segment of ER visits, suggesting that lack of dental insurance or an inability to meet high co-pays is driving such visits.

<sup>1</sup> Source: Emergency Room Database, Florida Agency on Health Care Administration

<sup>2</sup> Ambulatory care sensitive dental conditions, i.e. "preventable condition," are based on the ICD-9 (International Classification of Diseases, 9th Edition) codes from the published work of Dr. John Billings [http://wagner.nyu.edu/files/admissions/acs\\_codes.pdf](http://wagner.nyu.edu/files/admissions/acs_codes.pdf).