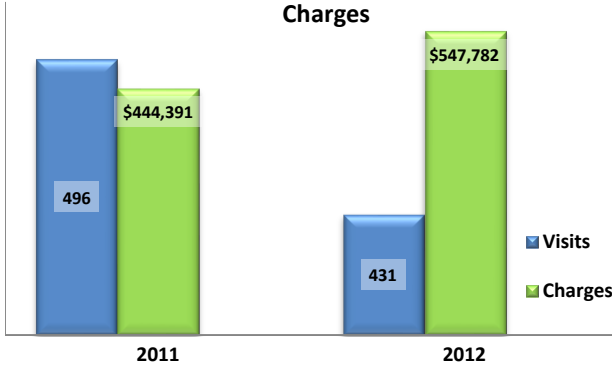


Emergency Department Dental Visits & Charges

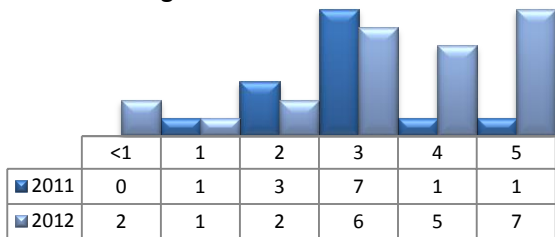


Ambulatory Care Sensitive oral health conditions (ACS) are those considered largely avoidable with adequate prevention and primary care. The use of hospital emergency departments – among the most expensive form of medical care – for the treatment of ACS conditions may indicate lack of access to primary dental care. Among the reasons Floridians do not receive regular preventive care include lack of dental coverage for adult Medicaid patients, lack of private-practice dentists willing to accept Medicaid’s low payment rates, lack of county health department resources, lack of affordable dental insurance or inability to meet high co-pays, and lack of awareness of the importance of dental health to overall health.

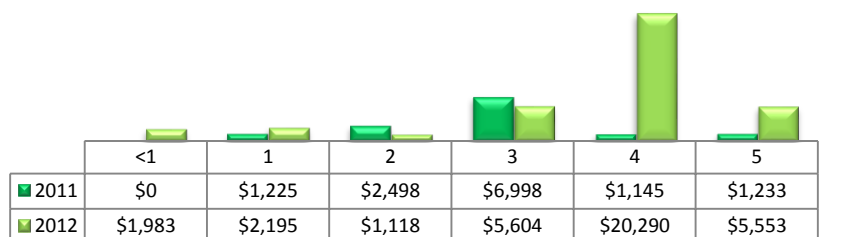
Floridians absorb the cost of Medicaid and uninsured ER dental visits in several ways including higher health insurance premiums and healthcare costs, increased tax dollars needed to fund the state Medicaid program, increased local tax dollars to support local public hospitals, and lost productivity.

Visits by Payor & Age						Charges by Payor & Age					
	0-19	19-34	35-49	50-64	65+		0-19	20-34	35-49	50-64	65+
2011	39	289	125	32	11	2011	37,382	229,210	128,570	39,996	9,233
Medicaid/Managed	24	103	45	8	0	Medicaid/Managed	24,558	79,902	45,015	7,132	-
Commercial	2	25	13	6	0	Commercial	1,176	20,300	20,527	15,588	-
Self-Pay/Uninsured	12	155	59	15	0	Self-Pay/Uninsured	10,853	124,835	57,181	14,180	-
Medicare/Managed	0	4	8	3	11	Medicare/Managed	-	3,339	5,847	3,096	9,233
All Other	1	2	0	0	0	All Other	795	834	-	-	-
2012	52	228	103	34	14	2012	62,183	278,208	123,991	54,888	28,512
Medicaid/Managed	31	98	27	2	0	Medicaid/Managed	30,485	131,616	18,834	1,099	-
Commercial	12	21	15	8	1	Commercial	26,477	29,433	20,036	14,687	1,271
Self-Pay/Uninsured	9	100	49	14	0	Self-Pay/Uninsured	5,221	110,651	58,004	11,905	-
Medicare/Managed	0	6	11	7	12	Medicare/Managed	-	3,700	26,327	19,591	25,545
All Other	0	3	1	3	1	All Other	-	2,808	790	7,606	1,696

Visits for Young Children for Preventable Conditions



Charges for Young Children for Preventable Conditions



Highest ED Dental ACS Visits by Zip Code

Zip Code	2011		2012	
	Visits	Charges	Visits	Charges
32433	197	156,211	141	205,683
32439	102	99,122	97	117,972
32435	75	55,987	57	67,189
32459	73	75,027	103	115,928
32550	42	51,297	27	33,749
32455	4	2,048	-	0
32538	2	1,135	2	2,267
32461	1	3,564	1	773
32434	-	0	1	787

Policy Indicators

Indicators to consider in shaping policies to increase the overall health of Floridians while decreasing costs to the state’s healthcare system:

- High numbers of Medicaid patients visiting the ER for ACS dental problems suggest a lack of access to dentists or oral healthcare clinics accepting Medicaid for both preventative care and for treatment.
- ER visits during the regular work day and traditional business hours, combined with ACS diagnoses, suggest visits being made to the ER in lieu of a clinic or dental office.
- Rates of adult tooth decay are higher in older adults yet patients aged 20 to 34 years comprise the largest segment of ER visits, suggesting that lack of dental insurance or an inability to meet high co-pays is driving such visits.

¹ Source: Emergency Room Database, Florida Agency on Health Care Administration

² Ambulatory care sensitive dental conditions, i.e. "preventable condition," are based on the ICD-9 (International Classification of Diseases, 9th Edition) codes from the published work of Dr. John Billings http://wagner.nyu.edu/files/admissions/acs_codes.pdf.